

简介 Introduction

MK08 型消火栓是由上海马克机电科技有限公司引进国外技术。经过多年的设计、制造方面的经验积累，结合客户方面的使用意见，全心打造的一代高品质消火栓，能够为客户带来安全可靠和更高效率的运作。

MK08 type fire hydrant is technology from abroad by Shanghai Mark Electromechanical Technology Co., Ltd. After years of experience in design and manufacturing, combined with customer opinions, the new generation of high-quality fire hydrants can be wholeheartedly built to bring customers safe, reliable, and more efficient operation.

特点 Features

1、防撞功能：消火栓受外力的碰撞后，消火栓立即止水，无高压水流喷射。只需购买损坏的配件就可进行安全修复。

Anti-bump function: Hydrant will not spray when it is hit by a vehicle. Only buy the damaged parts that it can be repaired.

2、自动排水功能：消火栓关闭后，能对地下埋管中的余水进行排放。以防止在寒冷地区使用时冻住管中的余水不能及时出水和管线开裂事故的发生。

Auto-drain function: After the fire hydrant is closed, the remaining water in the underground pipe can be discharged. In order to prevent the use in cold areas, the residual water in the frozen pipe can not be produced water timely.

3、适应各种环境：使用环境温度-40°C~120°C，能适用在全球大部分区域。

Adapt to a variety of environmental: Can be used at -40°C~120°C normally, Applications in the City, Refineries Steel, Coke Plants, Power Generation Plants, Storage Terminals, Petrochemical Plants, Paper Mills, Petroleum Docking Facilities etc.

4、消火栓安装后上体可 360° 旋转；

After the installation of fire hydrants, upper barrel can be rotated 360°.

5、全不锈钢阀座，所有底座都采用高强度球墨铸铁铸造；

The copper valve seat, all bases are used in high-strength nodular cast iron.

6、地下埋管采用高强度无缝钢管，紧固件采用不锈钢材质，不锈钢链条；

Underground penstock use high-strength ductile iron lower barrels. All Bolt and nut are stainless steel for corrosion resistance. Cap chain use stainless steel for corrosion resistance.

7、润滑油注入设计：消火栓在操作螺母和阀杆间提供可靠的润滑，减少受力扭矩。润滑剂能最大承受零下 40 度不冻结；

Design of lubrication oil filled in: Provides positive lubrication of operating nut and stem threads to reduce operating torque each time the hydrant is operated. Lubricants can withstand the minus 38 degrees not frozen.

8、易修复功能：无需挖开地面的混凝土，利用专用工具，就可对阀座及主密封进行维修更换。现场可快速更换各种型号水带接头。

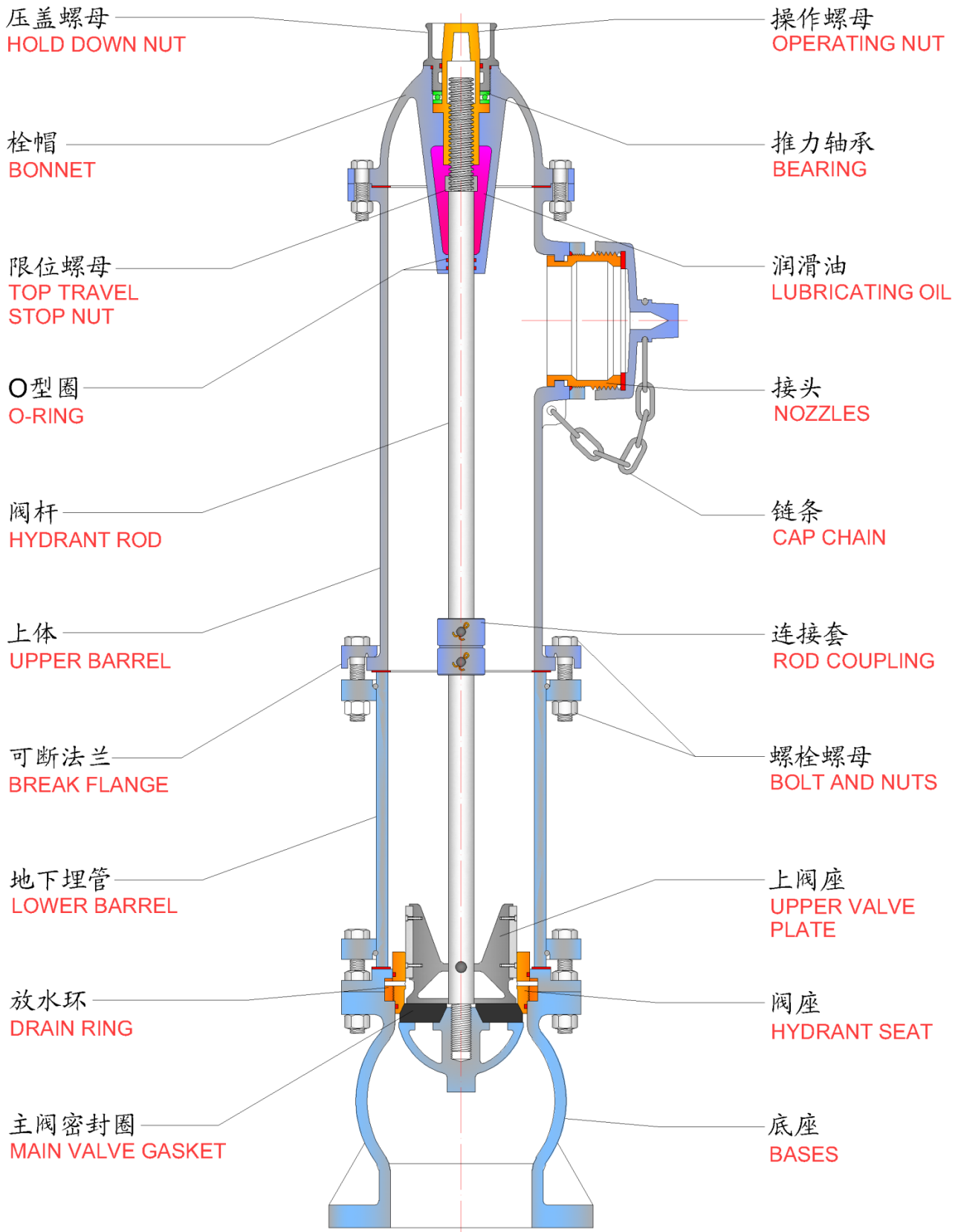
Easy to repair: Hydrant seat can be removed or replaced by professional tools without digging. Various types of connectors can be replaced at the scene.

9、消火栓使用规定符合美国水行业 AWWA C502 标准和 UL 246 及 FM 1510 的防火规范。

The fire hydrant use regulations comply with the AWWA C502 standard of the American water industry and the fire prevention specifications of the UL246 and FM1510.



**MK08 型消火栓
MK08 Fire Hydrant**



■ 压盖螺母 HOLD DOWN NUT

不锈钢材质铸造，分普通型和保护型两种。在栓帽和操作螺母之间有 O 型圈密封，以防止水进入。
Stainless steel casting concludes normal type and protection type. O-ring seal between bonnet and operating nut prevents water entry.

■ 操作螺母 OPERATING NUT

不锈钢精铸制造而成，开启消防栓时，有效减少与阀杆之间的摩擦系数。
Bronze casting sophisticated, when opening fire hydrants, reduce the coefficient of friction between stem effectively.

■ 栓帽 BONNET

上有“OPEN”和“CLOSE”以及箭头标志，也是栓内润滑油的存储处。
The word “open” and “close”, an arrow show direction to turn the operating nut, also it is the repository of lubricating oil.

■ 推力轴承 BEARING

开启消防栓时操作螺母会产生向上的推力，推力轴承能有效减少受力扭矩。
Takes upward thrust when opening hydrant valve and reduces operating torque.

■ 限位螺母 TOP TRAVEL STOP NUT

限制阀杆上下行程距离，防止消防栓开启到最大时与底座相碰。
Provides a positive limit to main rod travel, eliminates contact to the base when opening to the max.

■ 润滑油 LUBRICATING OIL

消防栓润滑剂能承受零下 40-120 度不冻结不变质。出厂前润滑油充足。
Provides positive lubrication of operating nut and stem threads each time the hydrant is operated. Lubricants can withstand the minus 40 degrees not frozen. Each fire hydrant must be lubricated before leaving the factory.

■ O 型圈 O-RING

保护润滑油不泄漏或进水，减少操作螺母与阀杆之间的摩擦力。O 型圈丁晴材料制作。
Protects lubrication leak and prevent water entry, reduce friction of operating nut and stem threads, O-ring material is resistant of Buna-N to ultra-violet ray deterioration.

■ 接头 NOZZLES

专利设计，可以在现场很短的时间内更换各种水带接头或吸水口接头。
Patented design, allows field replacement of hose nozzle and pumper nozzle in few times.

■ 阀杆 HYDRANT ROD

高强度不锈钢制造，分上、下阀杆，两阀杆之间带防撞功能。
Stainless steel for corrosion resistance casting, upper hydrant rod and lower hydrant rod, Anti -bump function when happens traffic accident.

■ 链条 CAP CHAIN

防止腐蚀采用不锈钢材料，还可以预防盗窃。
Use stainless steel for corrosion resistance. Can also prevent theft

■ 上体 UPPER BARREL

上体可 360° 度旋转，上有生产厂家、日期、型号和制造年份等标志。
Upper barrel can be rotated 360°. markings identifying size, model, and year of manufacture.

■ 连接套 ROD COUPLING

如遇外界一定力的撞击，此零件断开，保证主阀密封正常。

This part is disconnected if there is a collision or a traffic accident..

■ 可断法兰 BREAK FLANGE

固定上体与埋管连接。如遇外界一定力的撞击，此零件断开，不易损坏上体。无需挖开混凝土和关闭整个管道，只需购买此零件就可对消防栓进行修复。松开法兰上的螺栓螺母，上体还可以360°旋转。

Fix upper barrel and lower barrel, breaks cleanly to help prevent barrel damage in case of collision or traffic accident. Allows economical repair, adding of extension section, releasing the bolt and nut, rotating 360° of upper barrel without digging or water shut-off.

■ 螺栓螺母 BOLT AND NUTS

防止腐蚀采用不锈钢材料

Use stainless steel for corrosion resistance.

■ 地下埋管 LOWER BARREL

高强度球墨铸铁铸造，能有效承受外部重力的冲撞。

Ductile Iron casting can provide extra strength against traffic impact damage.

■ 上阀座 UPPER VALVE PLATE

圆锥外形，大流量水流设计，组合排水口密封面。

Conical design for smooth flow, with drain ports in seal on the both sides.

■ 放水环 DRAIN RING

阀座的安装处，阀座能在地面上轻松移除或安装。消防栓每次开启和关闭时，双排水阀能同时排放地下埋管中的余水，以防止在寒冷地区使用冻住余水。放水环是消防栓中的重要零件部位之一。

Each time main valve is opened or closed, double drain valves force-flush drain valve openings for effective lower barrel drainage to prevent water frozen. Drain valves are integral parts of main valve assembly.

■ 阀座 HYDRANT SEAT

铝青铜精密铸造，上有两个自动排水口。利用专用工具，无需挖开混凝土就可对阀座进行移除或安装。Bronze casting accurately machined, with two drain ports. Seat can be removed or installed by special tools without digging.

■ 主阀密封圈 MAIN VALVE GASKET

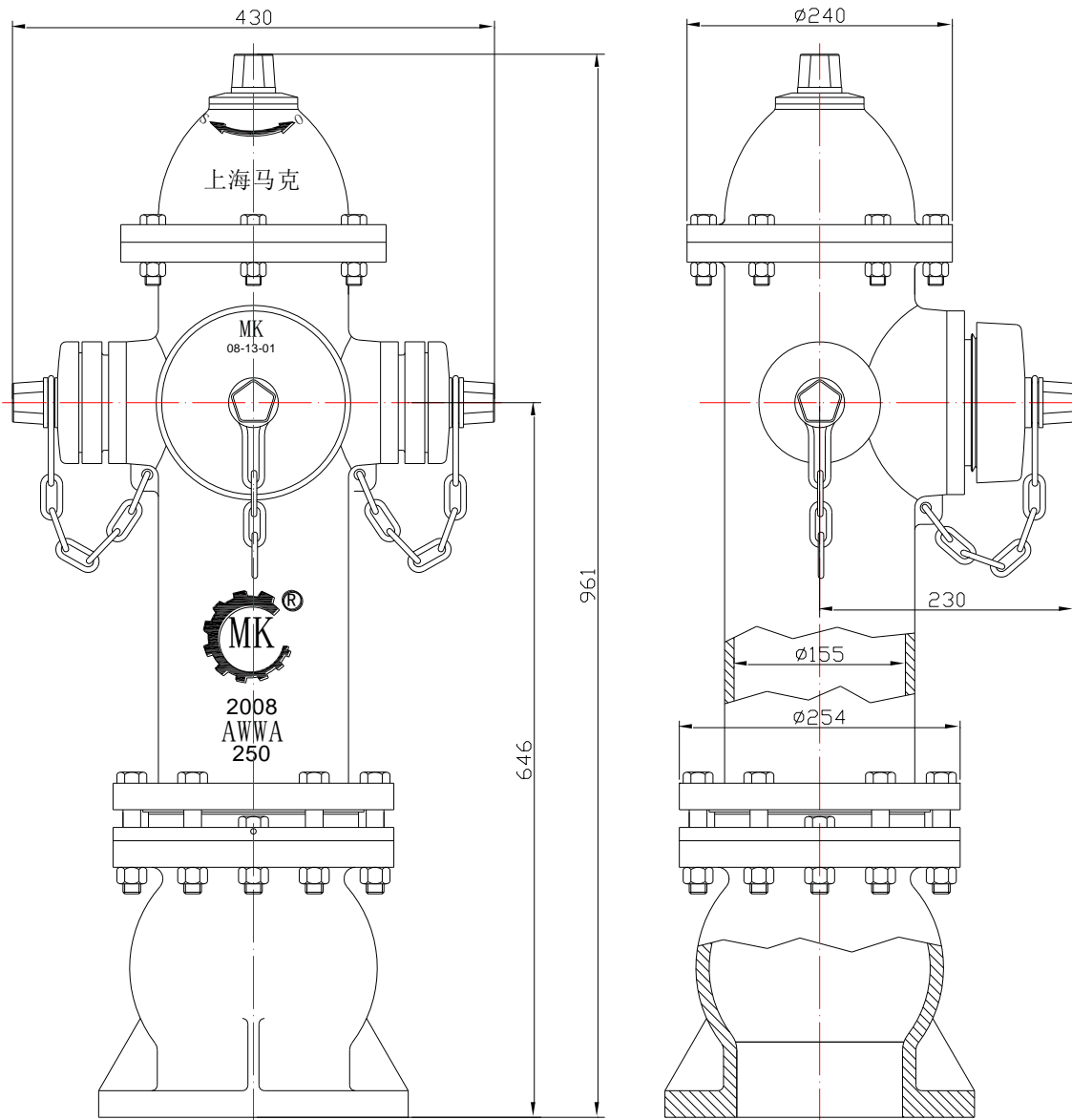
高强度丁腈橡胶材料制成，使用寿命长。位于上阀座与下阀座之间。

High-strength rubber materials, long life, located between the upper valve plate and the lower valve plate.

■ 底座 BASES

球式外形，根据流量压力学设计，能防止底部沉淀物的累积。高强度球墨铸铁铸造。

Ball-shape, according to flow pressure of design, can prevent the accumulation of sediments on the bottom. Epoxy-coated ductile iron casting.



注 NOTES:

1、本栓没有地下埋管；适合热带地区使用；

No lower barrel, Suitable for the tropics.

2、最大工作压力 250p.s.i.g.(1.72MPa)，测试压力 500p.s.i.g.(3.45MPa)；

Maximum working pressure 250p.s.i.g.(1.72MPa), test pressure 500p.s.i.g.(3.45MPa).

3、上体可以 360° 自由旋转；

After the installation of fire hydrants, upper barrel can be rotated 360°.

4、消防栓使用规定符合美国水行业 AWWA C502 标准和 UL 246 及 FM 1510 的防火规范。

All applicable requirements of ANSI/AWWA C502 Standard and UL 246 and FM 1510 specifications.

5、推荐使用压力 150p.s.i.g.(1.0MPa)或 200p.s.i.g.(1.38MPa)；

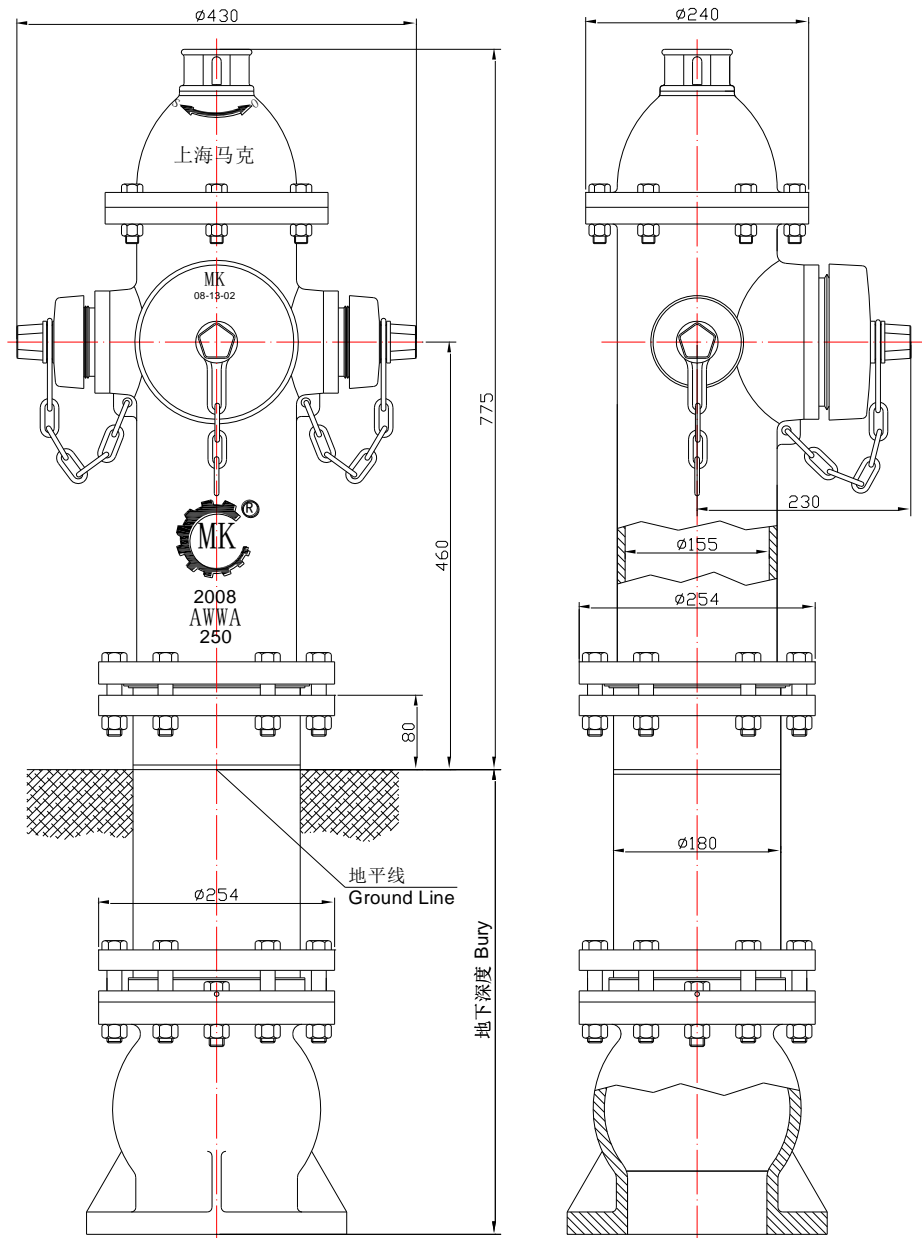
Recommended in use 150p.s.i.g.(1.0MPa)and 200p.s.i.g.(1.38MPa).

6、使用工况：城市、炼油厂、钢厂、焦炭厂、发电厂、仓库码头 石化厂、造纸厂、石油设施等。

Applications in: City, Refineries Steel, Coke Plants, Power Generation Plants, Storage Terminals, Petrochemical Plants, Paper Mills, Petroleum Docking Facilities.

单位 Units: mm

深度编号 Depth No.	埋深 Bury
1	500
2	550
3	600
4	650
5	700
6	750
7	800
8	850
9	900
10	950
11	1000
12	1050
13	1100
14	1150
15	1200
16	1250
17	1300
18	1350
19	1400
20	1450
21	1500
22	1550
23	1600
24	1650
25	1700
26	1750
27	1800



注 Notes:

1、本栓带地下防冻埋管，埋深长度由客户而定；

This fire hydrant with underground anti freezing buried pipe, the length of buried depth is determined by the customer;

2、最大工作压力 250p.s.i.g.(1.72MPa)，测试压力 500p.s.i.g.(3.45MPa)；

Maximum working pressure 250p.s.i.g.(1.72MPa), test pressure 500p.s.i.g.(3.45MPa).

3、消防栓使用规定符合美国水行业 AWWA C502 标准和 UL 246 及 FM 1510 的防火规范。

The fire hydrant use regulations comply with the AWWA C502 standard of the American water industry and the fire prevention specifications of the UL246 and FM1510.

4、推荐使用压力 150p.s.i.g.(1.0MPa)或 200p.s.i.g.(1.38MPa)；

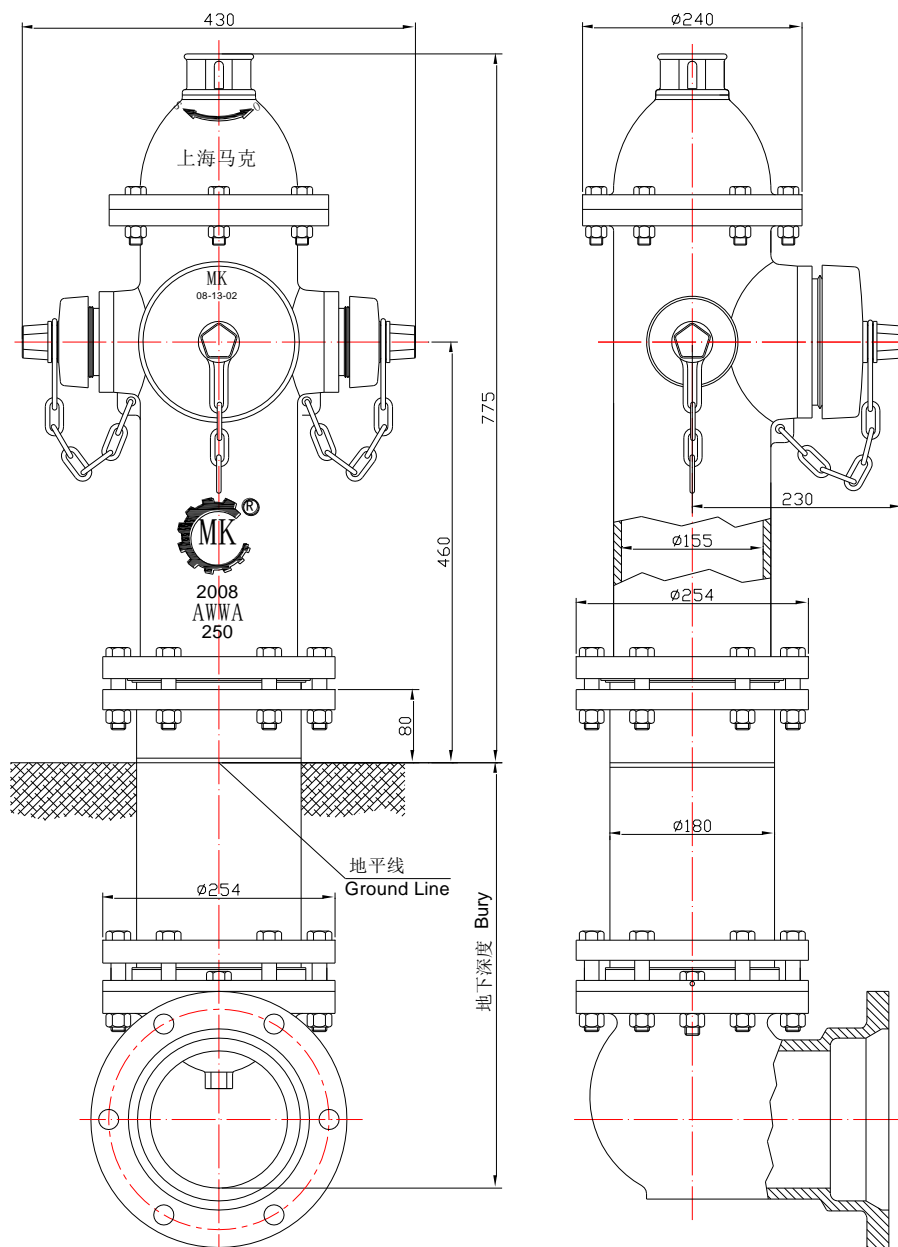
Recommended in use 150p.s.i.g.(1.0MPa)and 200p.s.i.g.(1.38MPa).

5、使用工况：城市、炼油厂、钢厂、焦炭厂、发电厂、仓库码头 石化厂、造纸厂、石油设施等。

Applications in: City, Refineries Steel, Coke Plants, Power Generation Plants, Storage Terminals, Petrochemical Plants, Paper Mills, Petroleum Docking Facilities.

单位 Units: mm

深度编号 Depth No.	埋深 Bury
1	500
2	550
3	600
4	650
5	700
6	750
7	800
8	850
9	900
10	950
11	1000
12	1050
13	1100
14	1150
15	1200
16	1250
17	1300
18	1350
19	1400
20	1450
21	1500
22	1550
23	1600
24	1650
25	1700
26	1750
27	1800



注 NOTES:

1、本栓带地下埋管，埋深长度由客户而定；

Hydrant has the lower barrel, the depth of burying determined by the customer.

2、最大工作压力 250p.s.i.g.(1.72MPa)，测试压力 500p.s.i.g.(3.45MPa)；

Maximum working pressure 250p.s.i.g.(1.72MPa), test pressure 500p.s.i.g.(3.45MPa).

3、上体可以 360° 自由旋转；

After the installation of fire hydrants, upper barrel can be rotated 360°.

4、消防栓使用规定符合美国水行业 AWWA C502 标准和 UL 246 及 FM 1510 的防火规范。

All applicable requirements of ANSI/AWWA C502 Standard and UL 246 and FM 1510 specifications.

5、推荐使用压力 150p.s.i.g.(1.0MPa)或 200p.s.i.g.(1.38MPa)；

Recommended in use 150p.s.i.g.(1.0MPa)and 200p.s.i.g.(1.38MPa).

6、使用工况：城市、炼油厂、钢厂、焦炭厂、发电厂、仓库码头 石化厂、造纸厂、石油设施等。

Applications in: City, Refineries Steel, Coke Plants, Power Generation Plants, Storage Terminals, Petrochemical Plants, Paper Mills, Petroleum Docking Facilities.

Markvalve

零件清单 Parts List

