

宁波绝特机械有限公司

NINGBO JUETE MACHINERY CO.,LTD

地址：浙江省宁波市奉化区溪口镇天湖路11号

手机：13082946888

18058576228

18058226228

官网：www.jvete.com



高压柱塞泵

J U E T E J I X I E

HIGH PRESSURE

PLUNGER PUMP



NINGBO
JUETE
MACHINERY
CO.,LTD
宁波绝特机械有限公司

质量第一
QUALITY FIRST

信誉至上
REPUTATION-BASED

顾客为本
CUSTOMER-ORIENTED

服务立足
SERVICE BASED

01 COMPANY PROFILE

企业简介



宁波绝特机械有限公司
NINGBO JUETE MACHINERY CO.,LTD



宁波绝特机械有限公司成立于2019年，公司坐落于宁波奉化区，是一家集高压柱塞泵的研发、生产、销售于一体的大型综合性泵业公司，自成立以来，凭借优质的产品质量、精准的市场定位、科学的营销理念、完善的配套体系，成功树立了“绝特”的优质品牌！

公司现有标准厂房3500多平米，拥有全国先进的生产加工设备，包括工业用泵测试中心以及各种高精度检测仪器等，并积极引进德国高端技术，在产品开发上坚持引进与自行开发相结合，业务覆盖了高压柱塞泵的生产、销售、维修、定制等一站式服务，并广泛应用于石油、化工、钢铁、船舶、水电、制糖、煤炭、矿山、建筑。汽车制造、市政环卫、管道试压、高压水射流等领域，目前，公司已与德国知名工业泵厂家从技术交流、产品应用等方面开展战略合作，依托雄厚的技术实力，高端的生产设备，科学的管理方法，专业的质量体系，已与众多客户建立了长期稳定的业务关系，并赢得了广大客户的信赖和一致好评。

公司拥有现代化的办公环境和先进的一流办公设施，本着精准把控、客户为本的服务理念，迅速凝聚了一大批高素质、高水平的人才加盟，组成了研发部、生产部、运营部、销售部、维修部等核心部门的行业专业人才，均具备扎实的理论及行业经验基础，并以顾客为关注焦点，建立完善的服务体系，努力为客户提供最为快捷、高效的产品和服务，为“绝特”塑造了良好的品牌形象。

未来，宁波绝特机械有限公司将继续“质量第一、信誉至上、顾客为本、服务立足”的经营理念，坚持“品控制造、刻苦高效”的服务宗旨，并以“快捷、高效、专业、完备”为主导思想，以“稳中求好、稳中求优、稳中求进”为原则，以经济效益为中心，以技术进步为支持，努力将宁波绝特机械有限公司发展成为科技含量高、产品质量好、人员素质优的世界一流泵业供应商。

Ningbo Jue Te Machinery Co., Ltd. was established in 2019. The company is located in Fenghua District, Ningbo. It is a large-scale comprehensive pump company integrating R&D, production and sales of high-pressure plunger pumps. Since its establishment, it has successfully established the high-quality brand of "Jue Te" with its high-quality product quality, precise market positioning, scientific marketing concept and perfect supporting system!

The company currently has more than 3,500 square meters of standard factory buildings and has the most advanced production and processing equipment in the country, including industrial pump testing centers and various high-precision testing instruments, etc., and actively introduces high-end German technology. In product development, it insists on combining introduction with self-development. The business covers the production, sales, maintenance, customization and other one-stop services of high-pressure plunger pumps, and is widely used in petroleum, chemical, steel, shipbuilding, hydropower, sugar, coal, mining and construction. In the fields of automobile manufacturing, municipal sanitation, pipeline pressure testing, high-pressure water jetting, etc., the company has carried out strategic cooperation with well-known German industrial pump manufacturers in terms of technical exchanges and product applications. Relying on strong technical strength, high-end production equipment, scientific management methods, and professional quality systems, it has established long-term and stable business relationships with many customers and won the trust and unanimous praise of customers.

The company has a modern office environment and advanced first-class office facilities. Based on the stock service concept of precise control and customer-oriented, it has quickly gathered a large number of high-quality and high-level talents to join, forming industry professionals in core departments such as R&D, production, operation, sales, and maintenance. They all have a solid theoretical and industry experience foundation, and focus on customers to establish a complete service system, strive to provide customers with the fastest and most efficient products and services, and create a good brand image for "Jue Te".

In the future, Ningbo Jue Te Machinery Co., Ltd. will continue to adhere to the business philosophy of "quality first, reputation first, customer-oriented, service-based", adhere to the service tenet of "quality control manufacturing, hard work and efficiency", and take "fast, efficient, professional and complete" as the leading idea, "stability, excellence and progress" as the principle, economic benefits as the center, technological progress as the support, and strive to develop Ningbo Jue Te Machinery Co., Ltd. into world-class pump supplier with high technological content, good product quality and excellent personnel quality.

2019^年

成立时间



PROFILE



02 CORPORATE CULTURE 企业文化

企业愿景

共筑绝特百年梦，全力打造享誉国际的泵业领导品牌。

企业使命

为员工创造平台，为企业创造利润，为客户创造价值。

核心价值观

诚信为本，服务社会，和谐共存，共享成就。

经营理念

质量第一、信誉至上、顾客为本、服务立足。

质量理念

永保品质，精心研发，创新工艺，创新产品。

员工精神

踏实、创新、开拓、共赢。

企业宗旨

对客户——诚心诚信，为顾客提供安全、精准、高品质的高压柱塞泵，把服务做到极致，成为能跟随客户共同发展的供货商！

对产品——严控产品质量关，以品质赢未来！

对员工——企业与员工相辅相成，共同铸就辉煌！

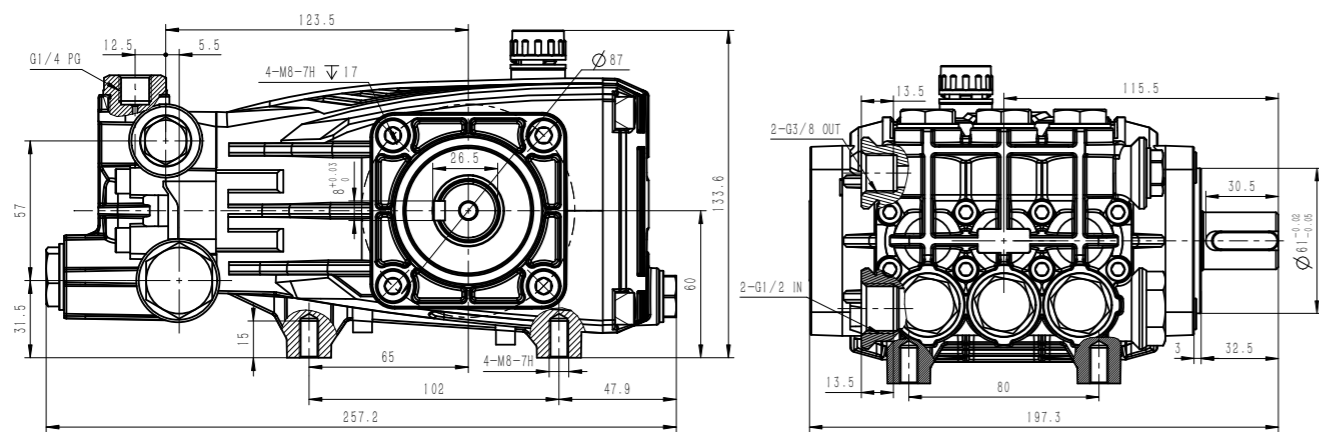
对企业——品质为本，成就行业品牌典范！

对社会——秉承初心，承担企业的社会责任，不断向前！

03 CORPORATE HONORS 企业荣誉



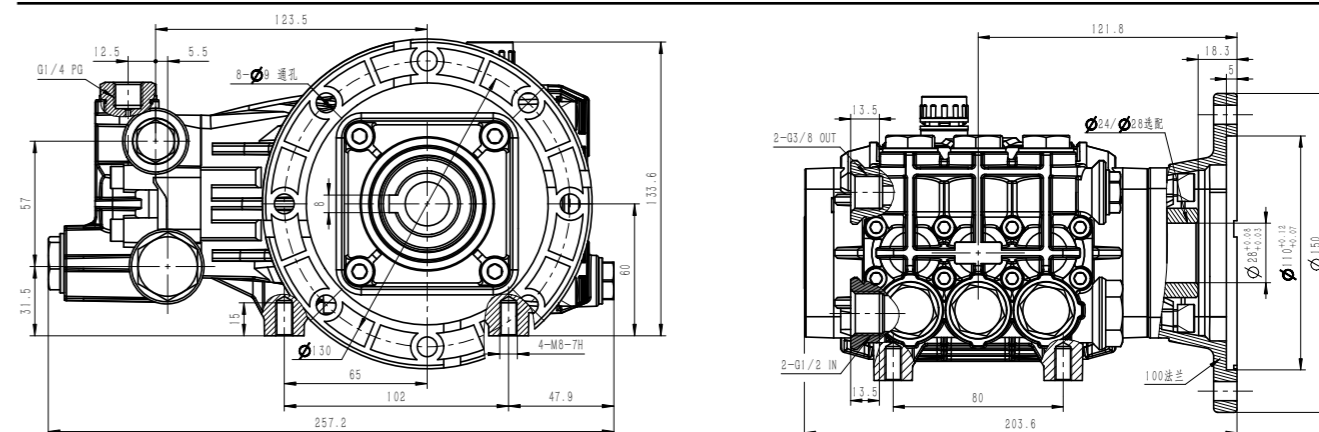
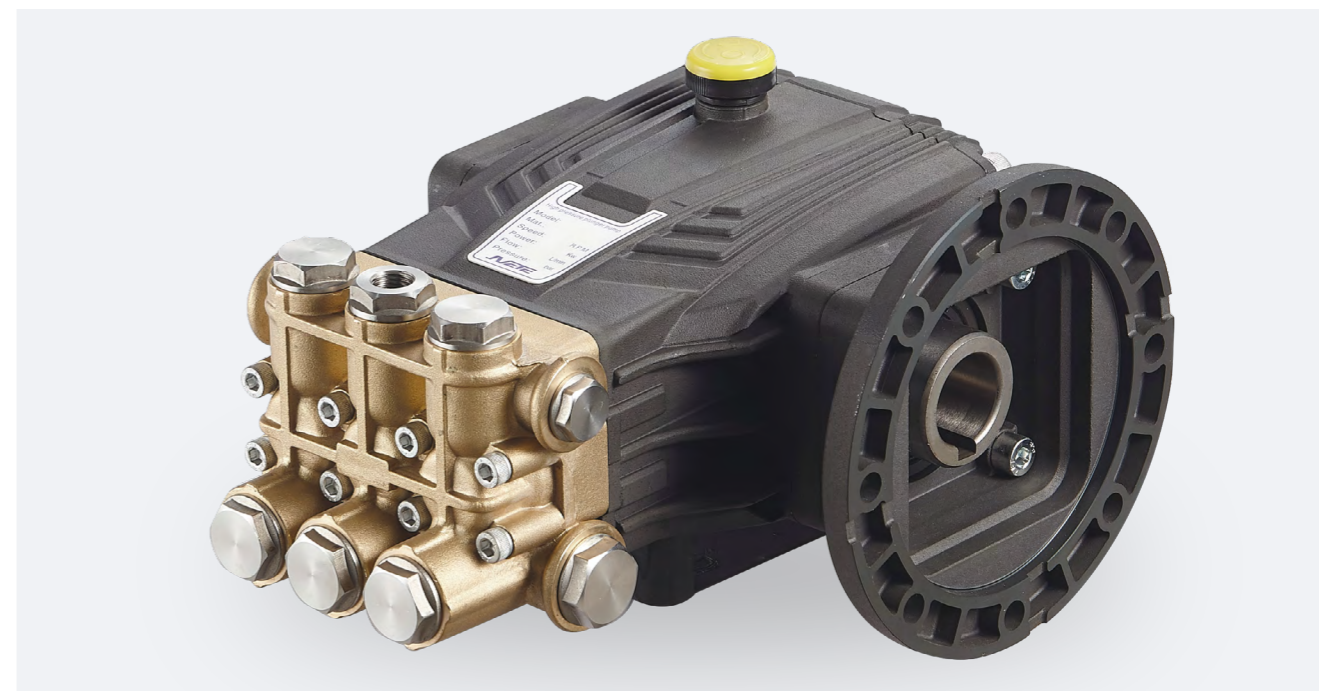
JPB-N SERIES



1450rpm N轴 Φ24mm

型号	流量		压力		功率		转速	柱塞直径	行程
Model	L/min	GPM	bar	psi	HP	kW	rpm	mm	mm
JPB0310-N24	3	0.79	100	1450	0.8	0.6	1450	18	3
JPB0510-N24	5	1.3	100	1450	1.3	1.0	1450	18	5
JPB0818-N24	8	2.1	180	2610	3.7	2.7	1450	18	7
JPB1120-N24	11	2.9	200	2900	5.7	4.2	1450	18	10
JPB1320-N24	13	3.4	200	2900	6.7	5.0	1450	18	12
JPB1520-N24	15	4	200	2900	7.8	5.7	1450	18	14
JPB1910-N24	19	5	100	1450	4.9	3.6	1450	20	14

JPB-C SERIES

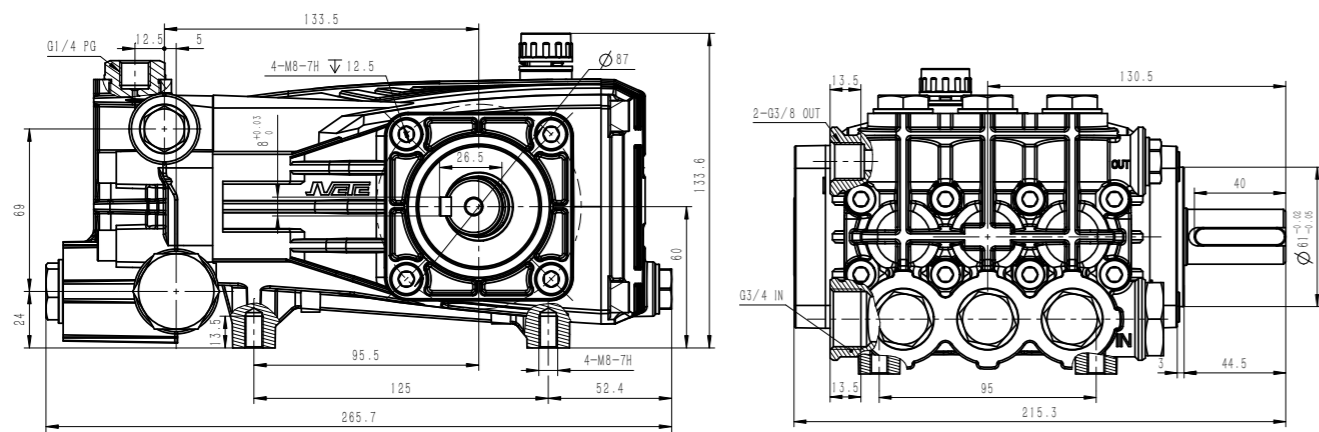


本图为 100 法兰 28 轴

1450rpm C轴 Φ24mm/Φ28mm 连接法兰 90 或 100 根据泵型选配

型号	流量		压力		功率		转速	柱塞直径	行程
Model	L/min	GPM	bar	psi	HP	kW	rpm	mm	mm
JPB0310-C24	3	0.79	100	1450	0.8	0.6	1450	18	3
JPB0510-C24	5	1.3	100	1450	1.3	1.0	1450	18	5
JPB0818-C24/C28	8	2.1	180	2610	3.7	2.7	1450	18	7
JPB1120-C28	11	2.9	200	2900	5.7	4.2	1450	18	10
JPB1320-C28	13	3.4	200	2900	6.7	5.0	1450	18	12
JPB1520-C24/C28	15	4	200	2900	7.8	5.7	1450	18	14
JPB1910-C24/C28	19	5	100	1450	4.9	3.6	1450	20	14

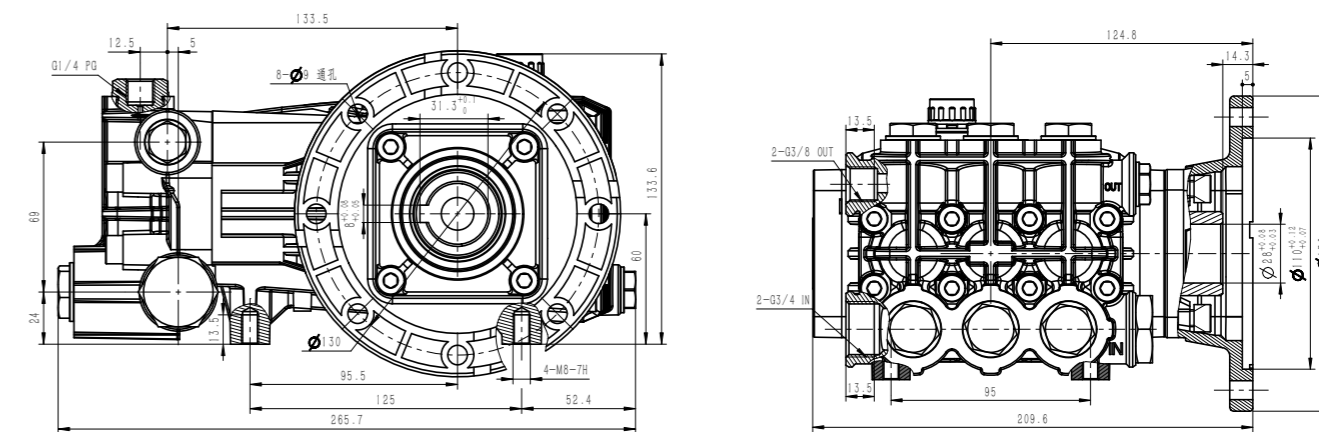
JPC-N SERIES



1450rpm N轴 Φ24mm

型号	流量		压力		功率		转速	柱塞直径	行程
Model	L/min	GPM	bar	psi	HP	kW	rpm	mm	mm
JPC1120-N24	11	2.9	200	2900	5.7	4.2	1450	18	10
JPC1520-N24	15	4.0	200	2900	7.8	5.7	1450	18	14
JPC1920-N24	19	5.0	200	2900	9.8	7.2	1450	20	14
JPC2320-N24	23	6.1	200	2900	11.9	8.8	1450	22	14
JPC3010-N24	30	7.9	100	1450	7.8	5.7	1450	25	14
JPC3510-N24	35	9.2	100	1450	9.1	6.7	1450	25	16.5

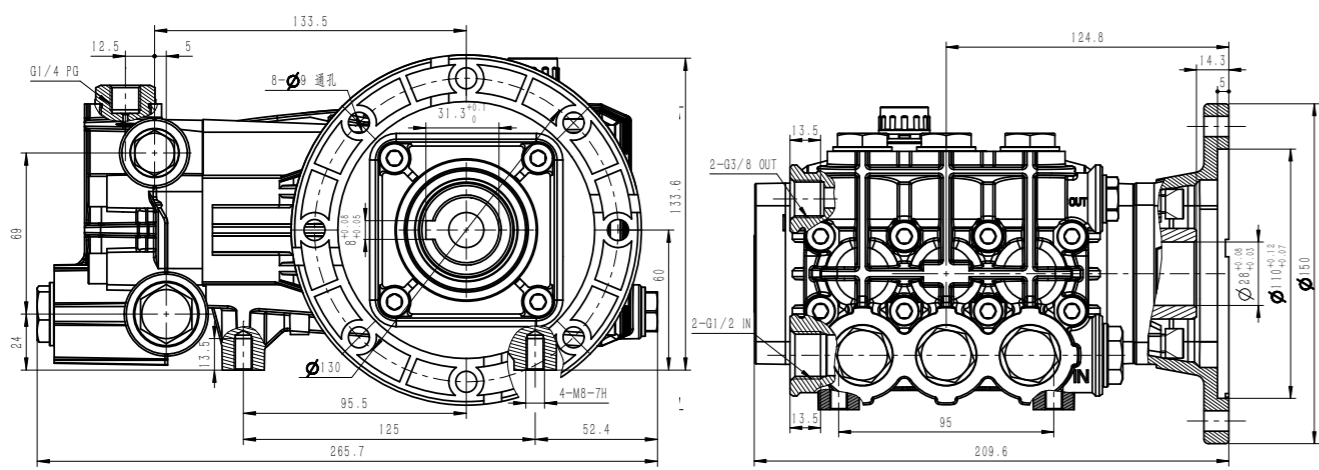
JPC-C SERIES



1450rpm C轴 Φ24mm/Φ28mm

型号	流量		压力		功率		转速	柱塞直径	行程
Model	L/min	GPM	bar	psi	HP	kW	rpm	mm	mm
JPC1120-C28	11	2.9	200	2900	5.7	4.2	1450	18	10
JPC1520-C28	15	4.0	200	2900	7.8	5.7	1450	18	14
JPC1920-C28	19	5.0	200	2900	9.8	7.2	1450	20	14
JPC2320-C28	23	6.1	200	2900	11.9	8.8	1450	22	14
JPC3010-C28	30	7.9	100	1450	7.8	5.7	1450	25	14
JPC3510-C28	35	9.2	100	1450	9.1	6.7	1450	25	16.5

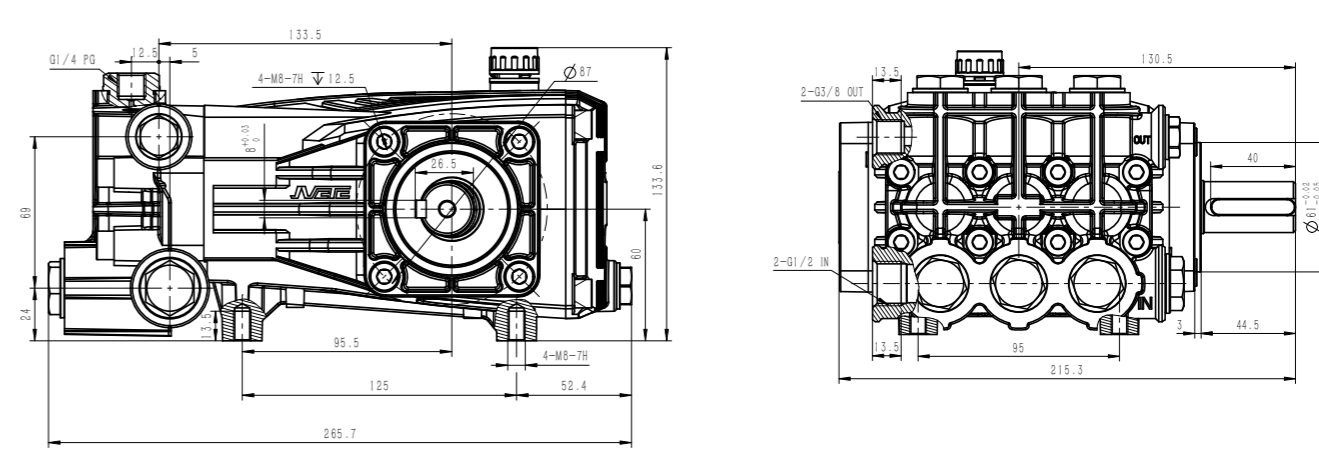
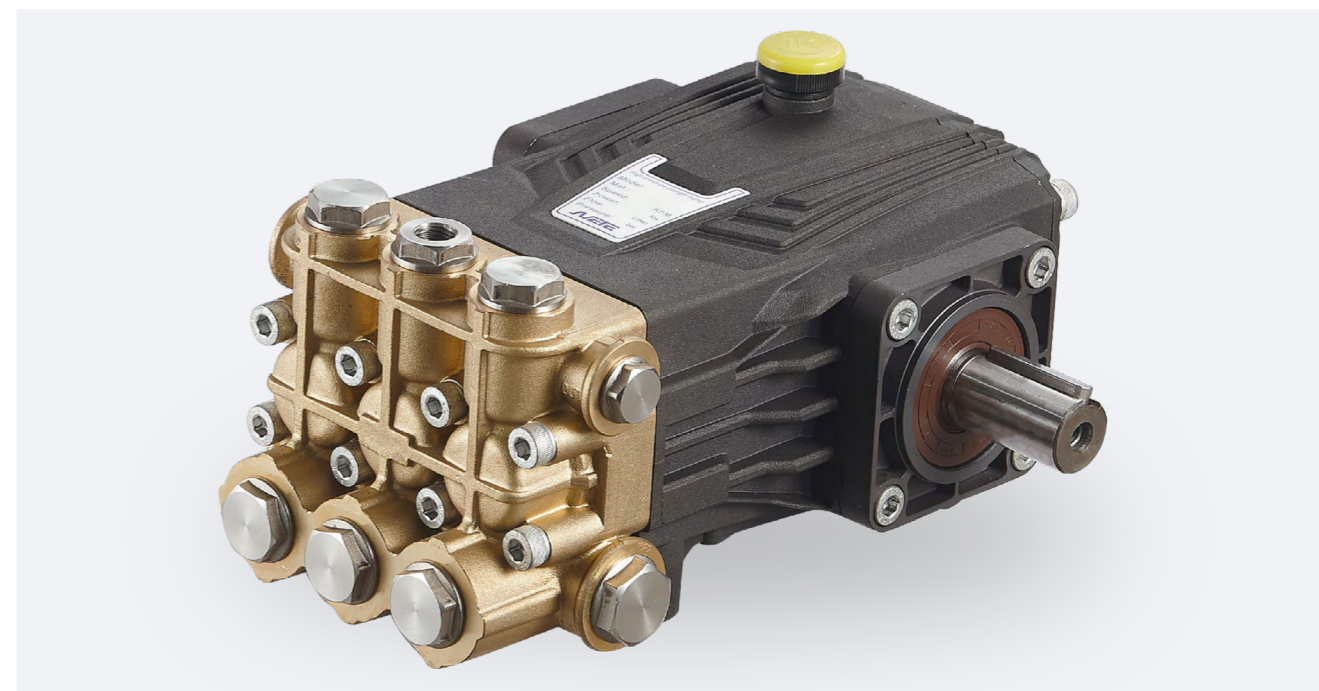
JPCH-C SERIES



1450rpm C轴 Φ28mm

型号	流量		压力		功率		转速	柱塞直径	行程
Model	L/min	GPM	bar	psi	HP	kW	rpm	mm	mm
JPCH1135-C28	11	2.9	350	5075	10.0	7.3	1450	18	10
JPCH1535-C28	15	4	350	5075	13.6	10.0	1450	18	14
JPCH1935-C28	19	5.0	350	5075	17.2	12.7	1450	20	14
JPCH2330-C28	23	6.1	300	4350	17.9	13.1	1450	22	14

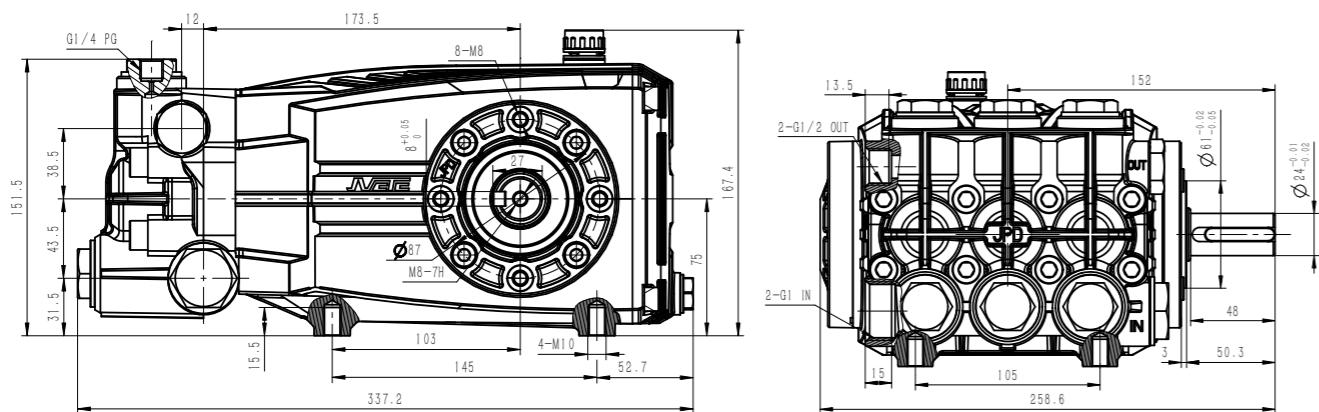
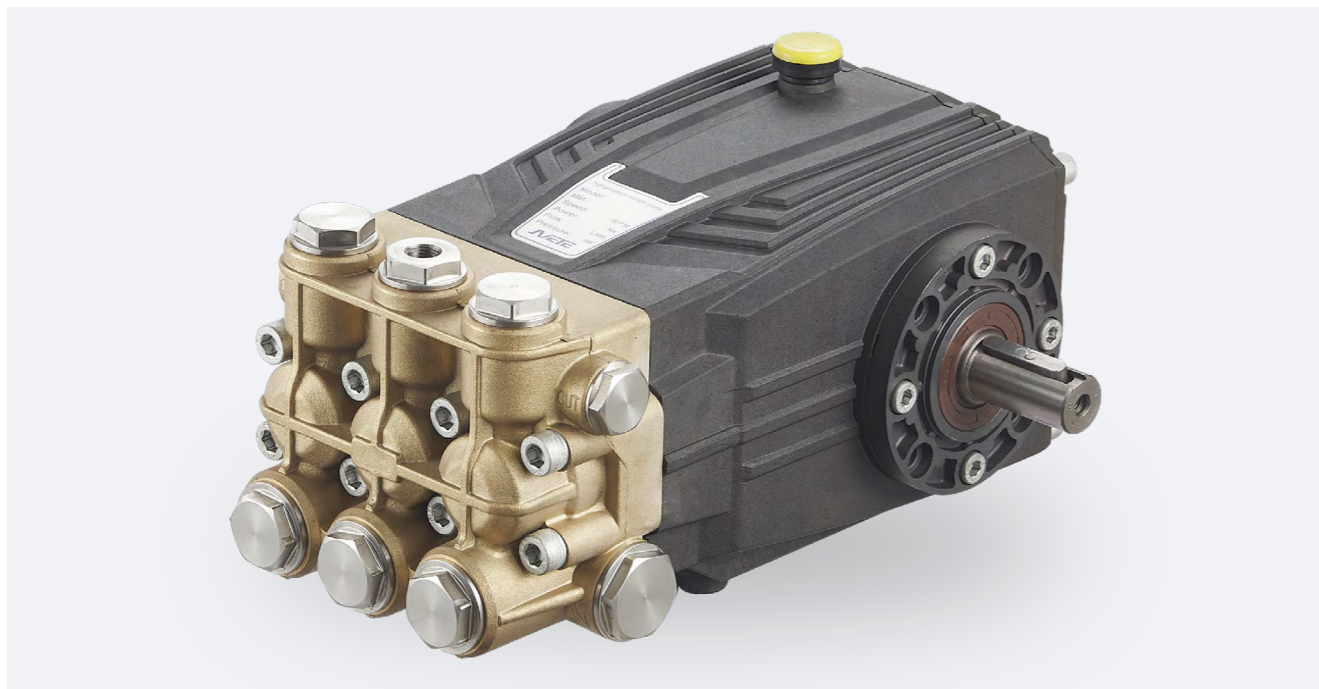
JPCH-N SERIES



1450rpm N轴 Φ24mm

型号	流量		压力		功率		转速	柱塞直径	行程
Model	L/min	GPM	bar	psi	HP	kW	rpm	mm	mm
JPCH1135-N24	11	2.9	350	5075	10.0	7.3	1450	18	10
JPCH1535-N24	15	4	350	5075	13.6	10.0	1450	20	14
JPCH1935-N24	19	5.0	350	5075	17.2	12.7	1450	20	14
JPCH2330-N24	23	6.1	300	4350	17.9	13.1	1450	22	14

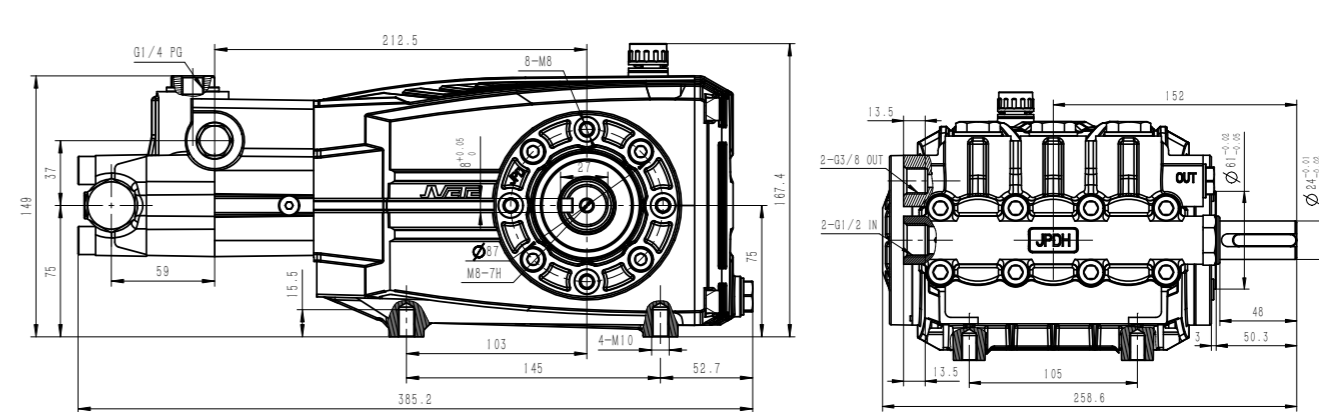
JPD SERIES



1450rpm N轴 Φ24mm

型号	流量		压力		功率		转速	柱塞直径	行程
Model	L/min	GPM	bar	psi	HP	kW	rpm	mm	mm
JPD3020	30	7.93	200	2900	15.5	11.4	1450	28	11
JPD4020	40	10.6	200	2900	20.7	15.2	1450	28	15
JPD5615	56	14.8	150	2175	21.8	16.0	1450	28	21
JPD7310	73	19.3	100	1450	18.9	13.9	1450	32	21

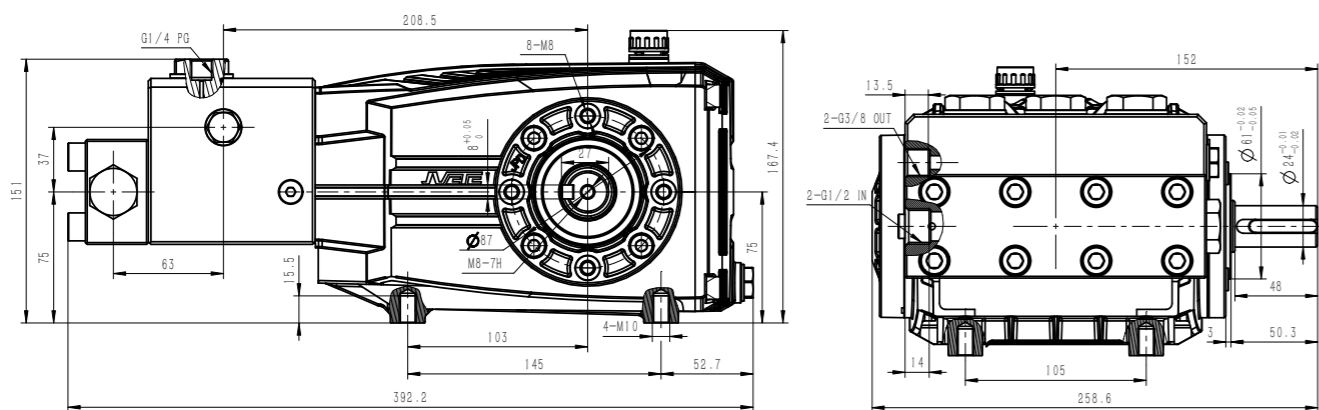
JPDH SERIES



1450rpm N轴 Φ24mm

型号	流量		压力		功率		转速	柱塞直径	行程
Model	L/min	GPM	bar	psi	HP	kW	rpm	mm	mm
JPDH1250	12	3.17	500	7250	15.5	11.4	1450	18	11
JPDH1650	16	4.2	500	7250	20.7	15.2	1450	18	15
JPDH1850	18	4.8	500	7250	23.3	17.1	1450	16	21
JPDH2250	22	5.8	500	7250	28.5	21.0	1450	18	21
JPDH2850	28	7.4	500	7250	36.3	26.7	1450	20	21

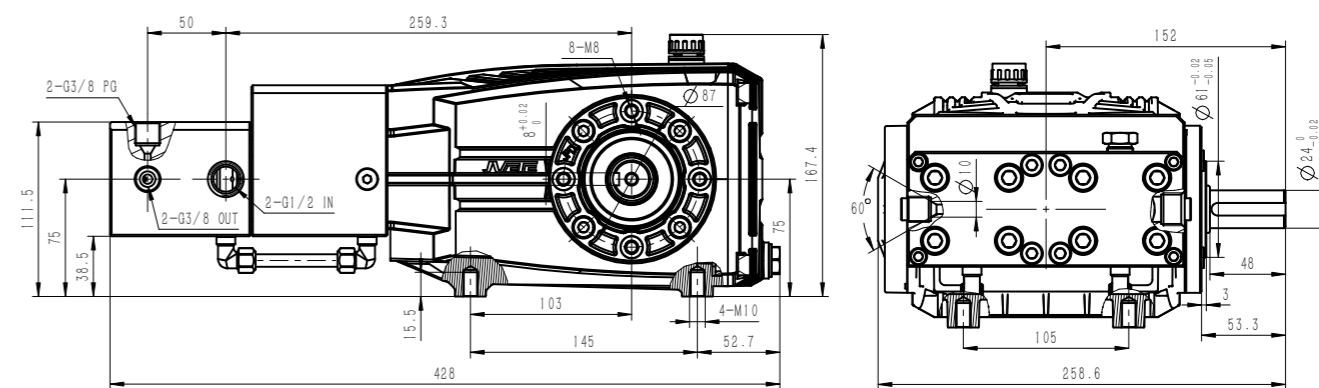
JPDS SERIES



1450rpm N轴 Φ24mm

型号	流量		压力		功率		转速	柱塞直径	行程
Model	L/min	GPM	bar	psi	HP	kW	rpm	mm	mm
JPDS1660	16	4.2	600	8700	24.9	18.3	1450	18	15
JPDS2260	22	5.8	600	8700	34.2	25.1	1450	18	21
JPDS2850	28	7.4	500	7250	36.3	26.7	1450	20	21
JPDS1870	18	4.8	700	10150	32.7	24.0	1450	16	21

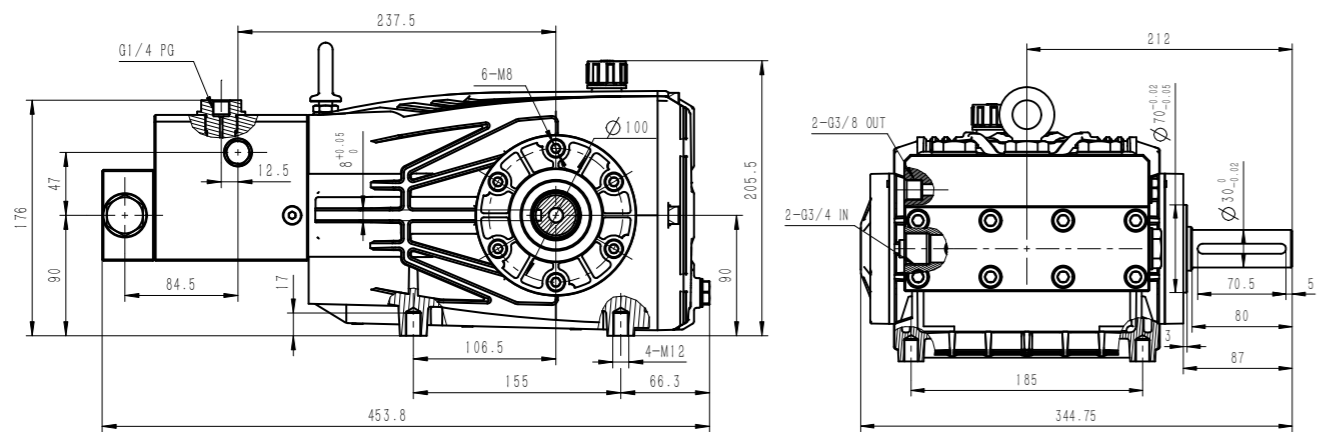
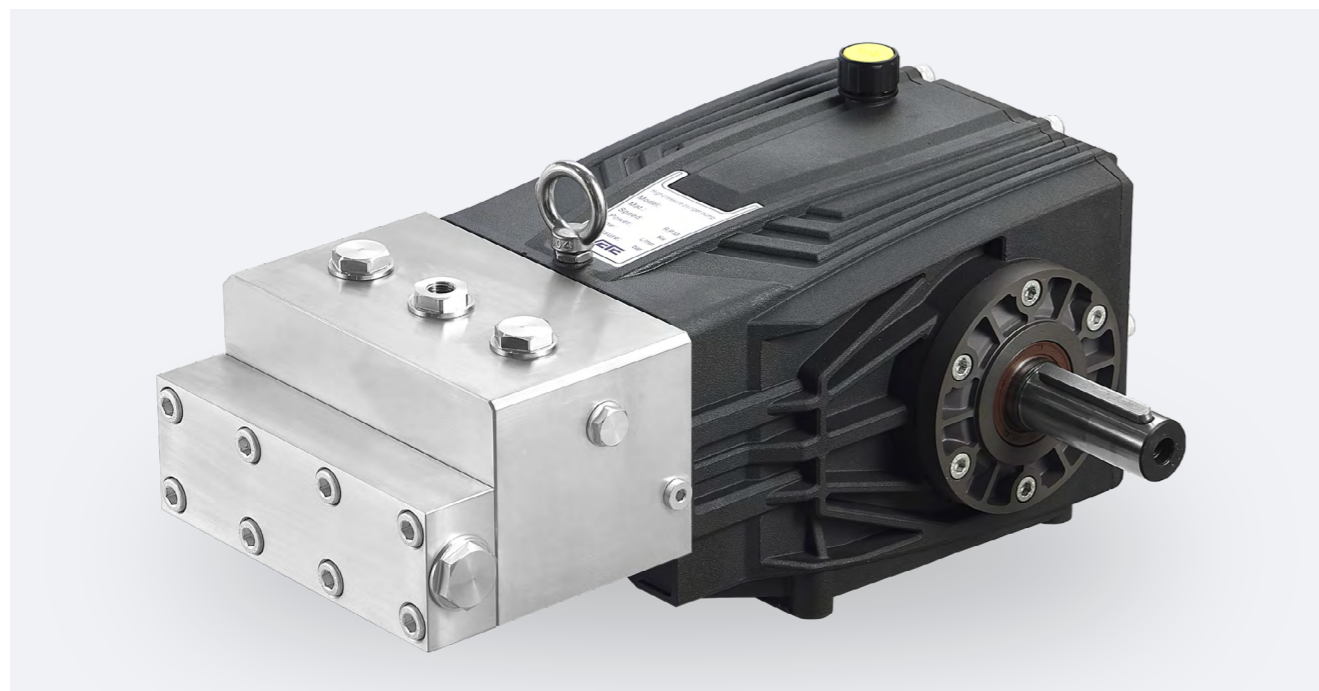
JPDT SERIES



1450rpm N轴 Φ24mm

型号	流量		压力		功率		转速	柱塞直径	行程
Model	L/min	GPM	bar	psi	HP	kW	rpm	mm	mm
JPDT10	6	1.6	1500	21750	23.3	17.1	1450	10	21
JPDT12	8	2.1	1200	17400	24.9	18.3	1450	12	21
JPDT16	18	4.8	800	11600	37.3	27.4	1450	16	21

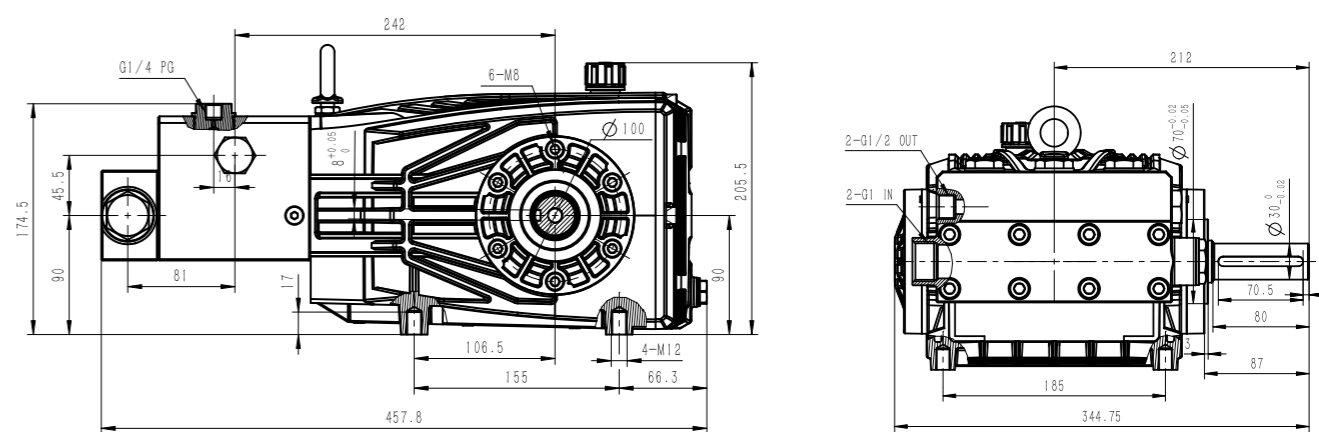
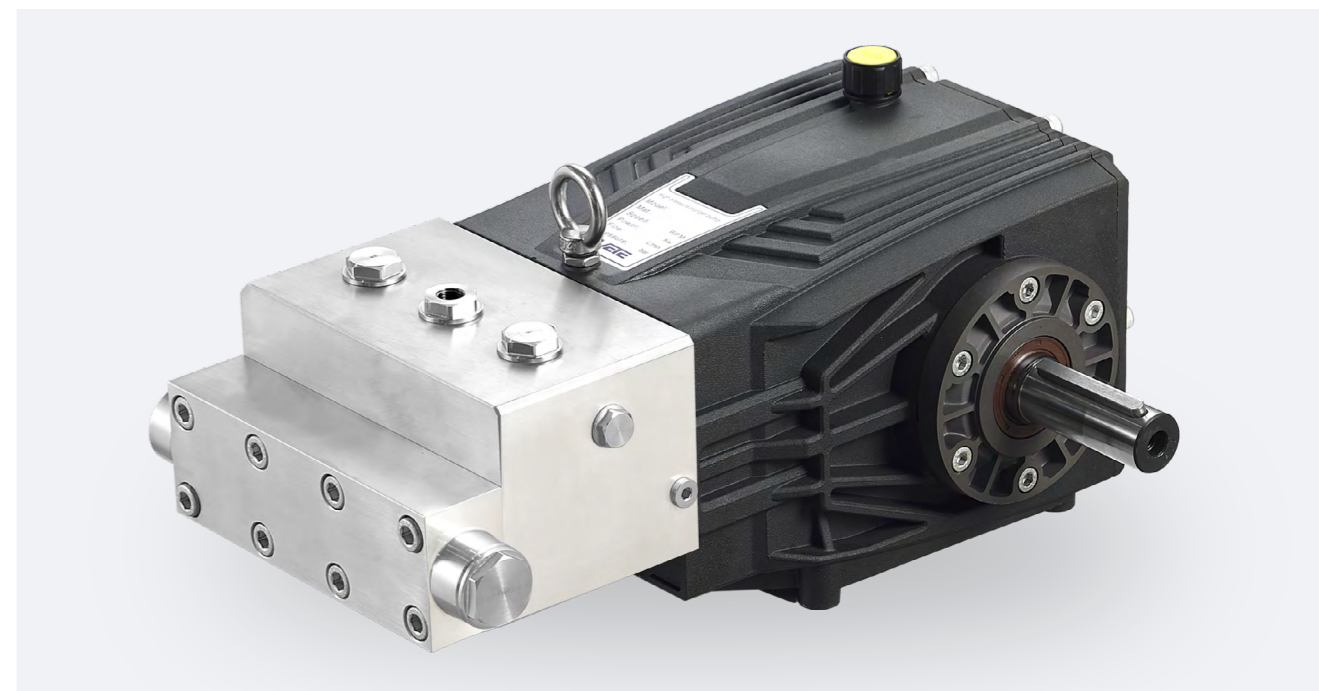
JPES SERIES



1450rpm N轴 Φ30mm

型号	流量		压力		功率		转速	柱塞直径	行程
Model	L/min	GPM	bar	psi	HP	kW	rpm	mm	mm
JPES16	24	6.3	700	10150	43.5	32.0	1450	16	27.5
JPES18	30	7.9	600	8700	46.6	34.3	1450	18	27.5
JPES20	37	9.9	500	7250	47.9	35.2	1450	20	27.5
JPES22	45	11.9	400	5800	46.6	34.3	1450	22	27.5

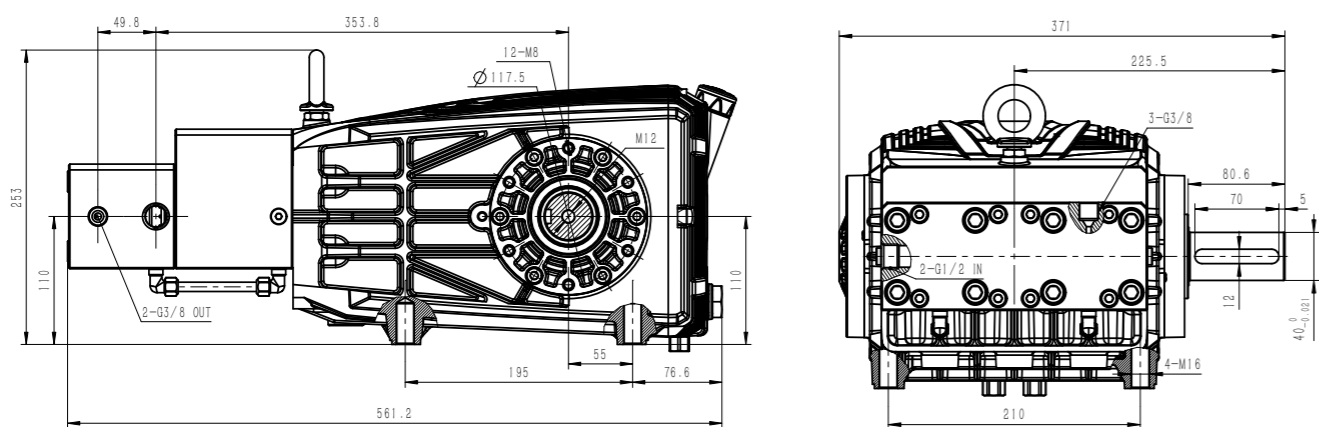
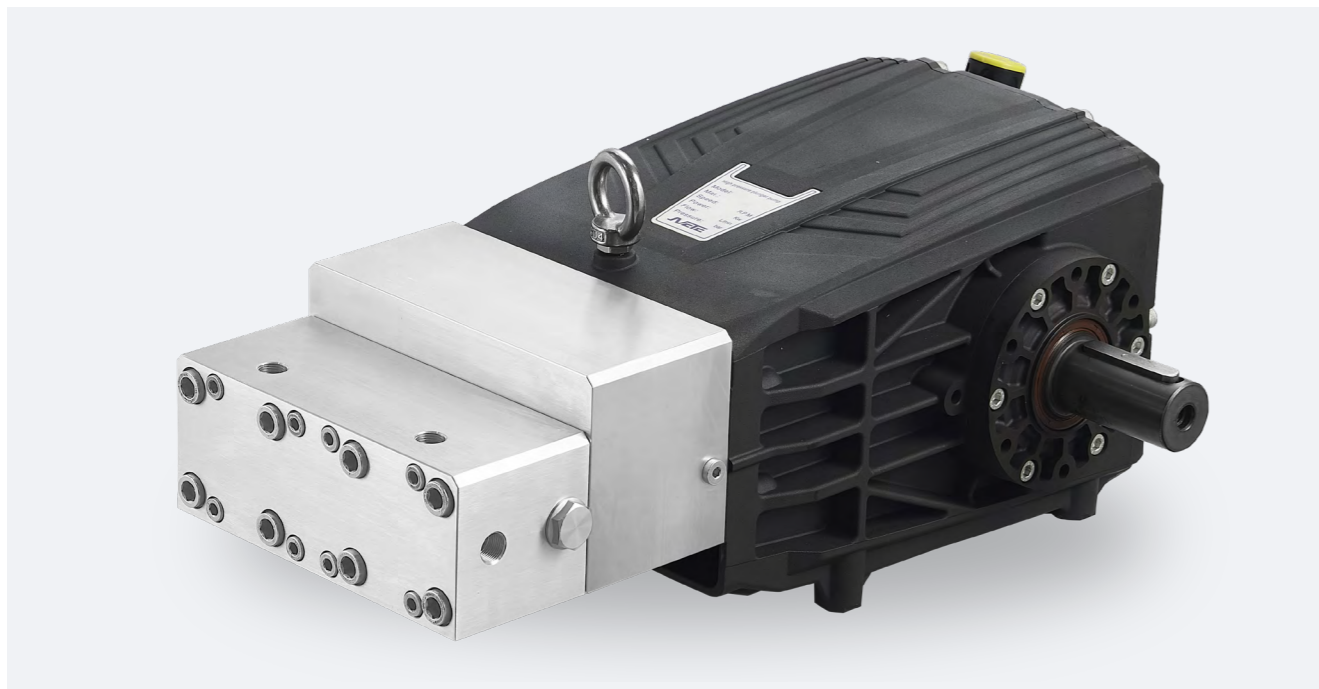
JPES SERIES



1450rpm N轴 Φ30mm

型号	流量		压力		功率		转速	柱塞直径	行程
Model	L/min	GPM	bar	psi	HP	kW	rpm	mm	mm
JPES25	58	15.3	300	4350	45.1	33.1	1450	25	27.5
JPES28	73	19.3	280	4060	53.0	38.9	1450	28	27.5
JPES30	85	22.4	200	2900	44.1	32.4	1450	30	27.5

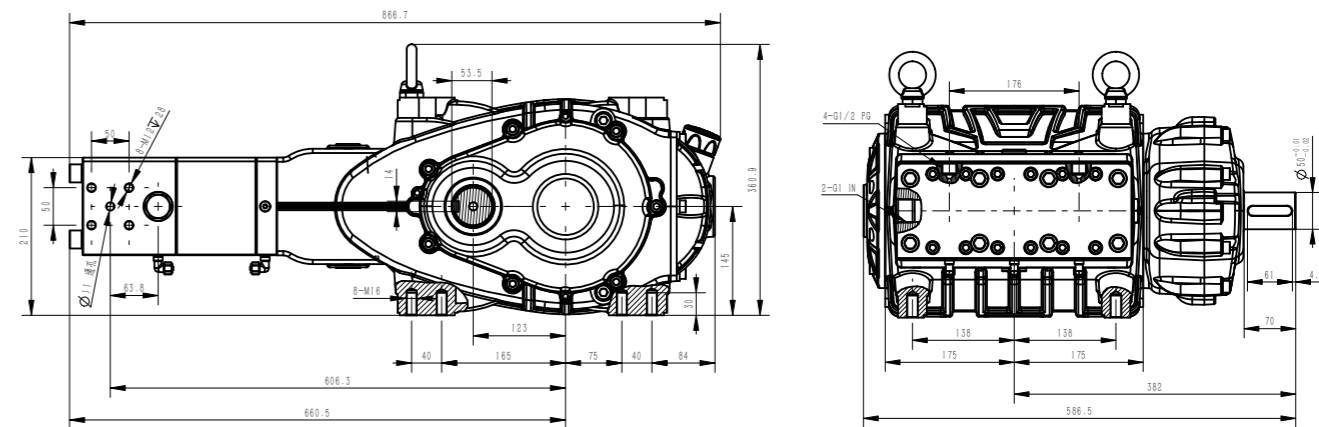
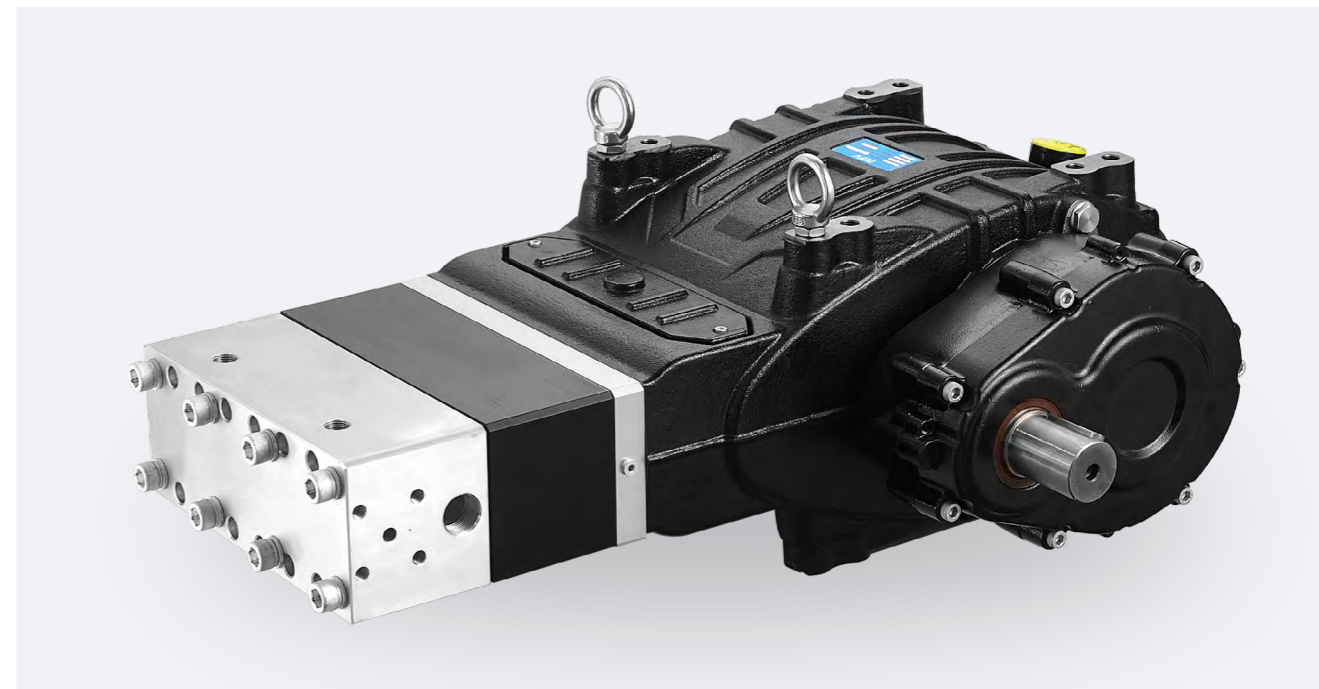
JPFT SERIES



N 轴 $\phi 40\text{mm}$

型号	流量		压力		功率		转速	柱塞直径	行程
Model	L/min	GPM	bar	psi	HP	kW	rpm	mm	mm
JPFT10A	11.75	3.1	2000	29000	60.9	44.8	1000	10	50
JPFT12A	17	4.5	1500	21750	66.1	48.6	1000	12	50
JPFT14	23	6.08	1000	14500	59.6	43.8	1000	14	50
JPFT16	30	8.1	800	11600	62.2	45.7	1000	16	50

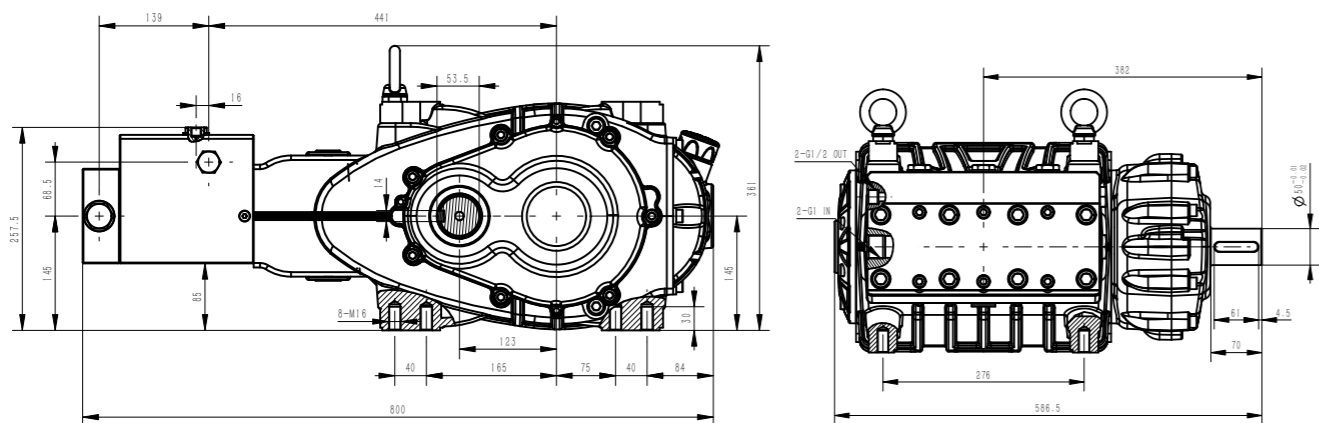
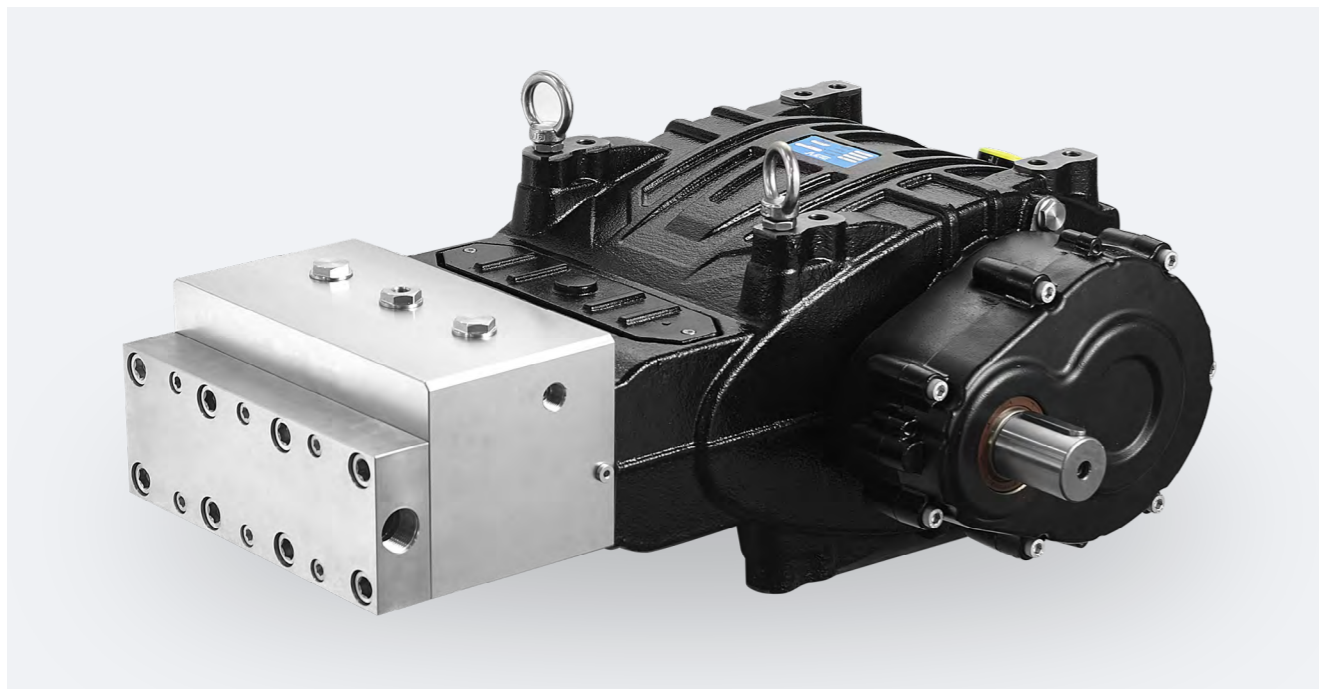
GWT SERIES



N 轴 $\phi 50\text{mm}$

型号	转速	流量		压力		功率		柱塞直径
Model	rpm	L/min	GPM	bar	psi	HP	kW	mm
GWT12	1500(1.83)	19	5	2300	33350	113.2	83.2	12
GWT14	1500(1.83)	26	6.8	1800	26100	121.3	89.1	14
GWT16	1500(1.83)	33	8.7	1300	18850	111.2	81.7	16
GWT18	1500(1.83)	43	11.3	1000	14500	111.4	81.9	18

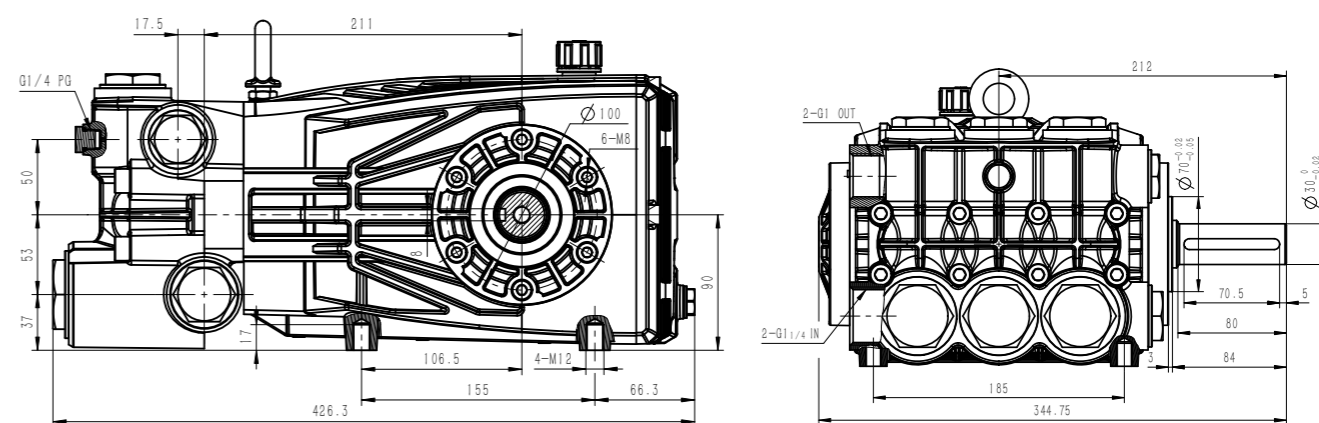
GWS SERIES



N 轴 $\Phi 50\text{mm}$

型号	转速	流量		压力		功率		柱塞直径
Model	rpm	L/min	GPM	bar	psi	HP	kW	mm
GWS20	1500(1.83)	54	14.2	700	10150	98.0	72.0	20
GWS22	1500(1.83)	65	17.1	600	8700	101.1	74.3	22
GWS25	1500(1.83)	83	21.9	500	7250	107.5	79.0	25

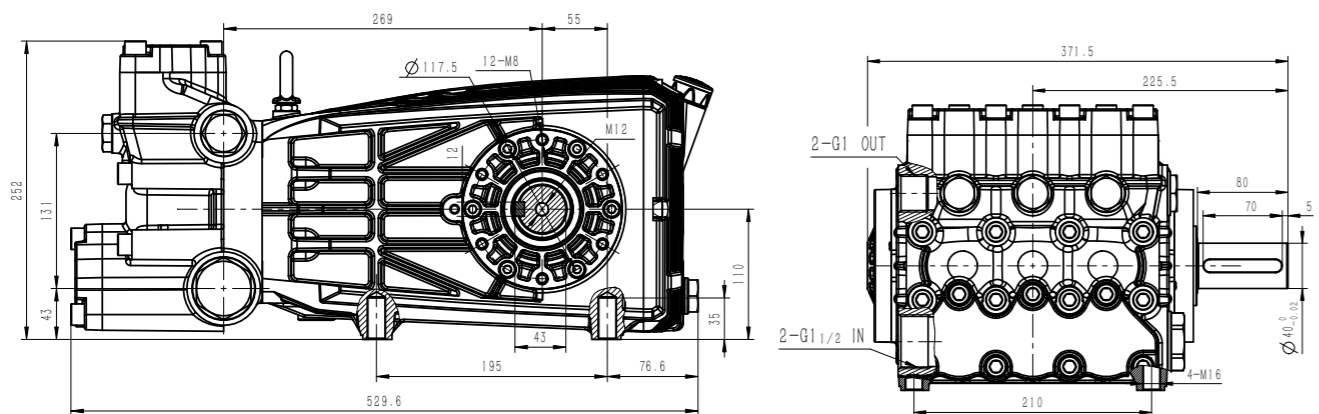
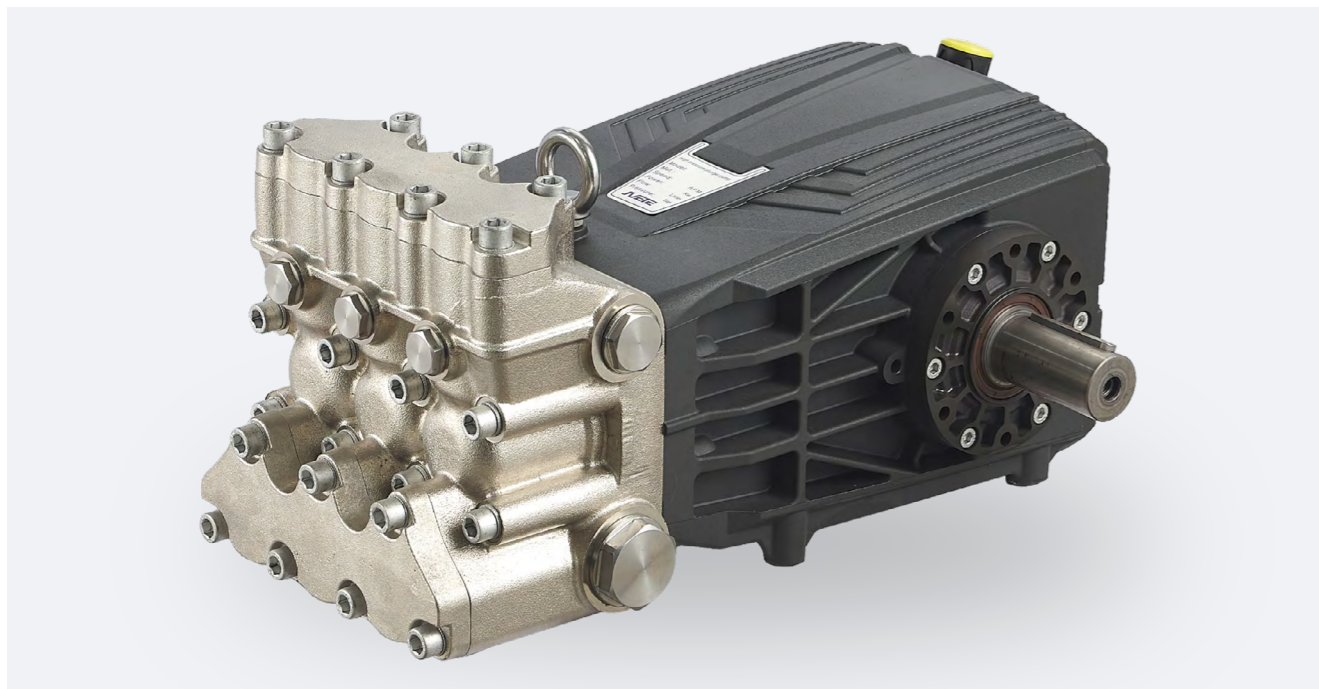
JPE SERIES



N 轴 $\Phi 30\text{mm}$

型号	流量		压力		功率		转速	柱塞直径	行程
Model	L/min	GPM	bar	psi	HP	kW	rpm	mm	mm
JPE32	96	25.4	180	2610	44.8	32.9	1450	32	27.5
JPE36	121	32	130	1885	40.8	30.0	1450	36	27.5
JPE40	150	39.6	100	1450	38.9	28.6	1450	40	27.5
JPE45	131	34.6	100	1450	33.9	25.0	1000	45	27.5
	105	27.7	100	1450	27.2	20.0	800		27.5

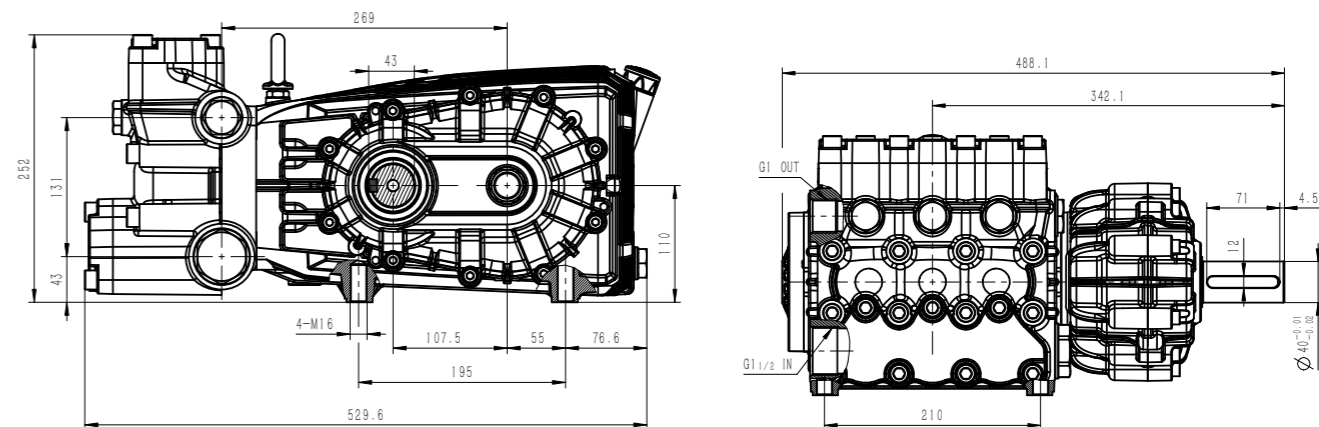
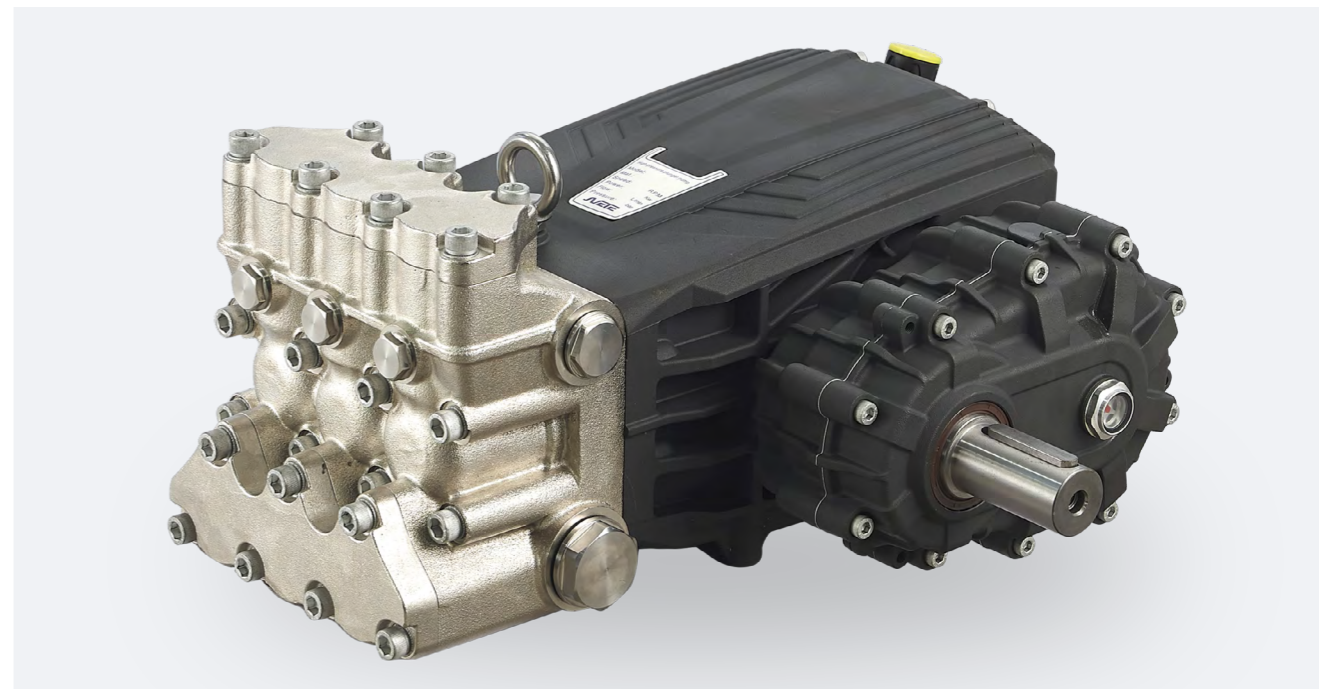
JPF SERIES



N 轴 $\Phi 40\text{mm}$

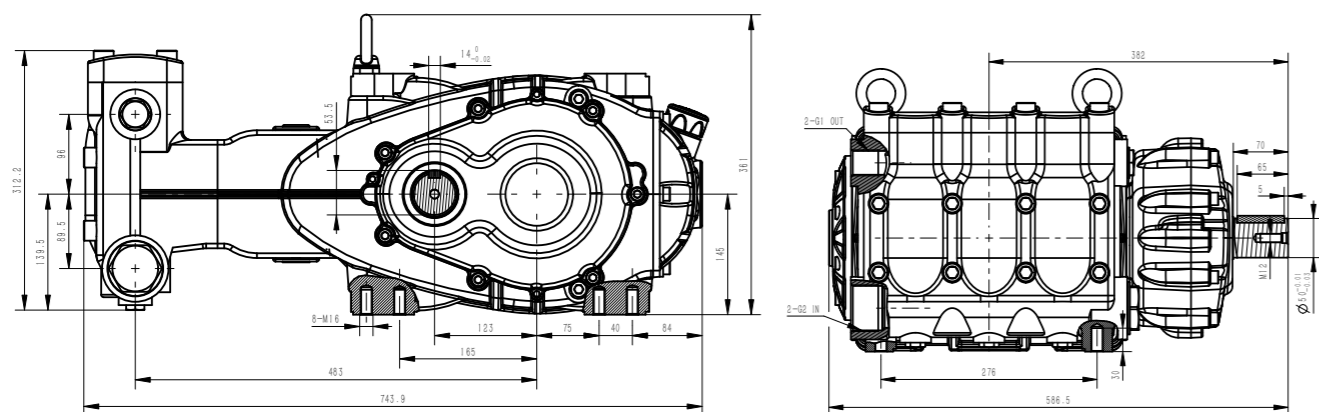
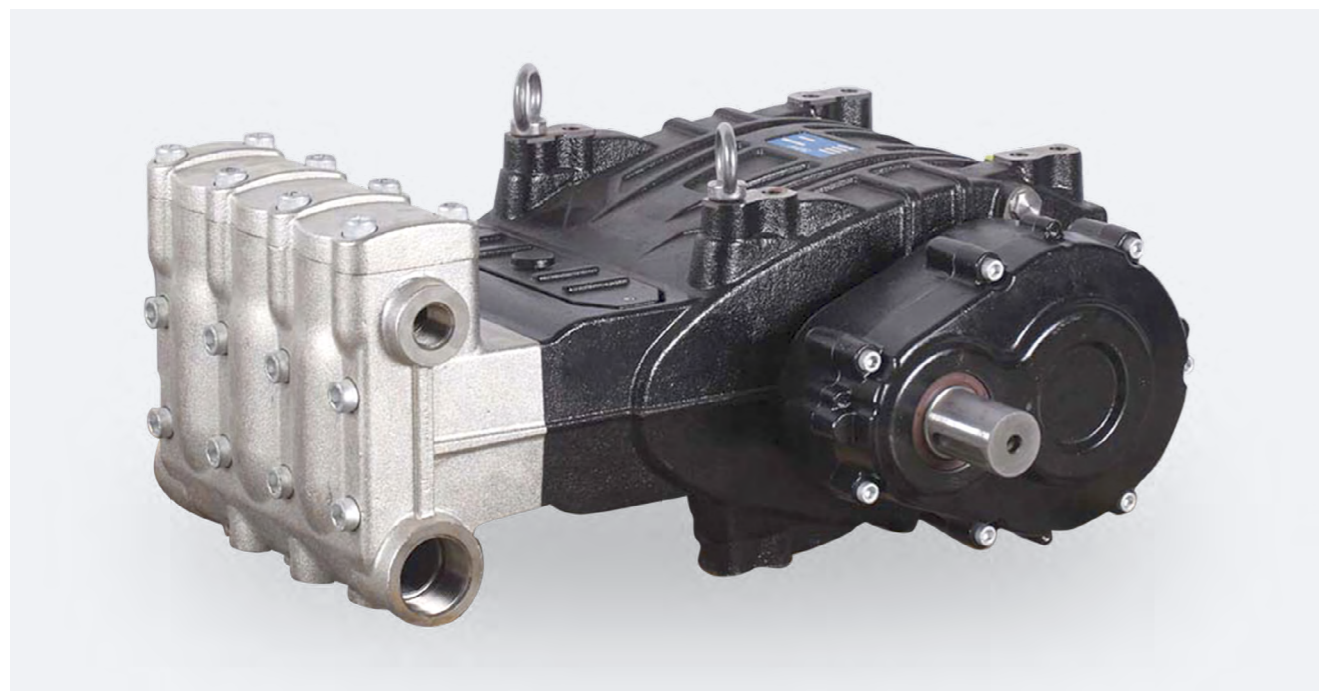
型号	流量		压力		功率		转速	柱塞直径	行程
Model	L/min	GPM	bar	psi	HP	kW	rpm	mm	mm
JPF32	120	31.7	160	2320	49.8	36.6	1000	32	50
JPF36	152	40.1	130	1885	51.2	37.6	1000	36	50
JPF40	188	49.6	110	1595	53.6	39.4	1000	40	50
JPF45	190	50	80	1160	39.4	29.0	800	45	50

FW SERIES



型号	压力						
Model	bar						
输入转速、减速比、泵转速	IN	1500		1800		2200	
	i	1.25	1.5	1.818	2.15	2.15	
	OUT	1200	1000	990	837	1023	
FW32	160	L/min	143	120	119	100	123
		kW	43.6	36.6	36.3	30.5	37.5
FW36	130	L/min	183	152	151	127	156
		kW	45.3	37.6	37.4	31.4	38.6
FW40	100	L/min	226	188	186	157	192
		kW	43.0	35.8	35.4	29.9	36.6

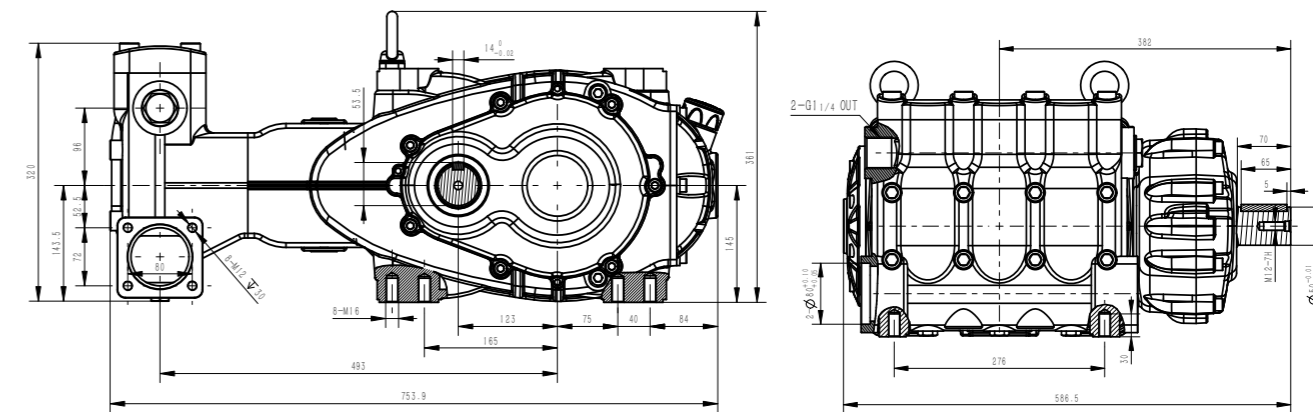
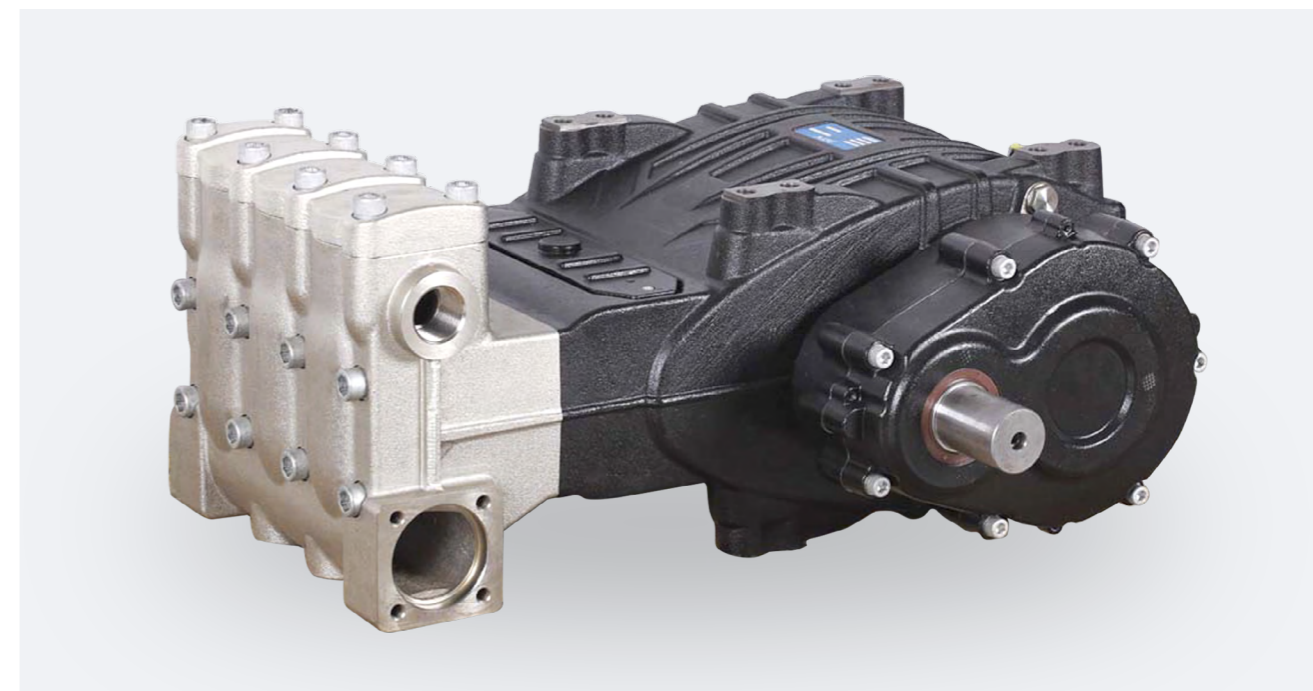
GW SERIES



N 轴 $\Phi 50\text{mm}$

型号 Model	压力 bar										
输入转速、减速比、泵转速	IN	1000			1500			1800			2200
	i	1.52	1.62	1.72	1.83	2.23	2.23	2.77	2.77		
GW32	300	OUT	658	617	872	820	672	807	650	794	
		L/min	110	104	147	138	113	136	109	134	
GW36	230	kW	62.9	59.4	84.0	78.9	64.6	77.7	62.3	76.6	
		L/min	140	131	186	175	143	172	138	169	
GW40	210	kW	61.3	57.4	81.5	76.7	62.6	75.4	60.5	74.0	
		L/min	173	162	229	216	177	212	171	209	
		kW	69.2	64.8	91.6	86.4	70.8	84.8	68.4	83.6	

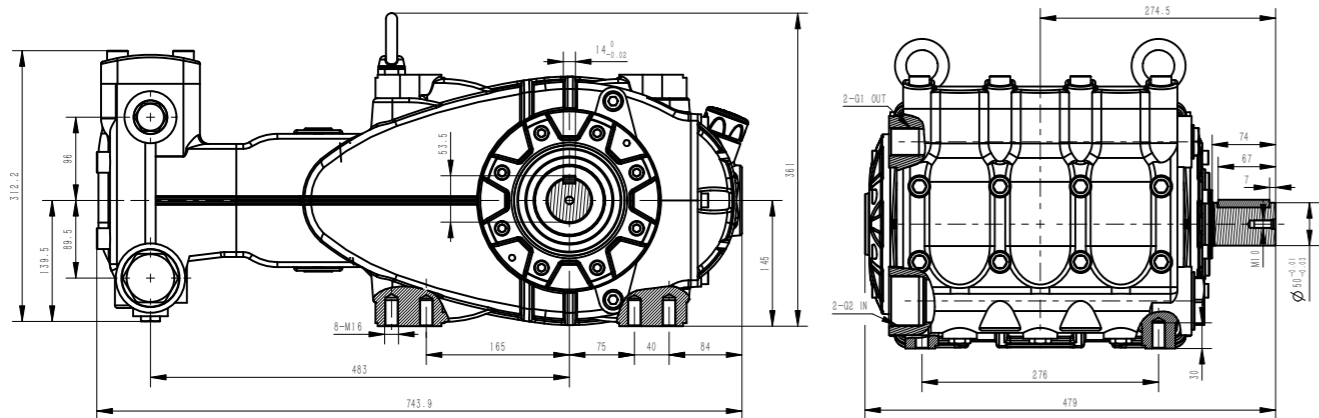
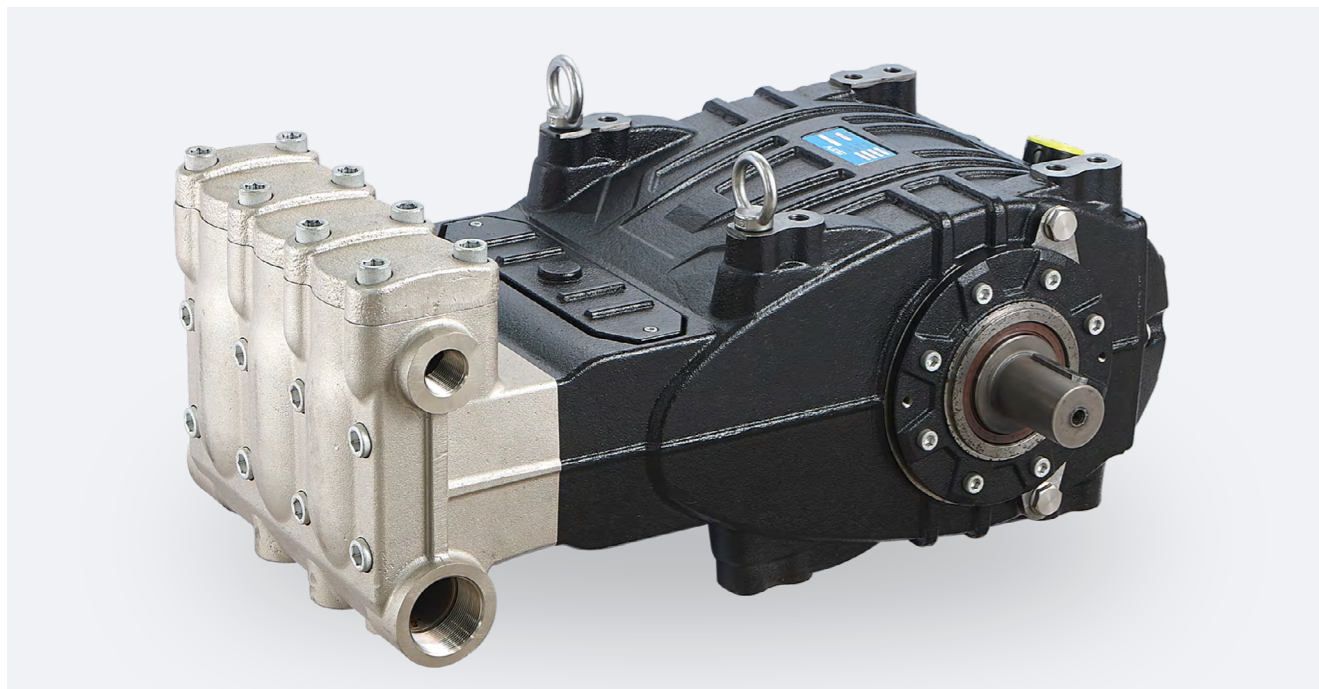
GW SERIES



N 轴 $\Phi 50\text{mm}$

型号 Model	压力 bar										
输入转速、减速比、泵转速	IN	1000			1500			1800			2200
	i	1.52	1.62	1.72	1.83	2.23	2.23	2.77	2.77		
GW45	150	OUT	658	617	872	820	672	807	650	794	
		L/min	219	205	291	273	224	209	216	265	
GW50	125	kW	62.6	58.6	83.1	78.0	64.0	59.7	61.7	75.7	
		L/min	271	254	359	337	276	332	267	327	
GW55	100	kW	64.5	60.5	85.5	80.2	65.7	79.0	63.6	77.9	
		L/min	328	307	434	408	335	402	324	395	
		kW	62.5	58.5	82.7	77.7	63.8	76.6	61.7	75.2	

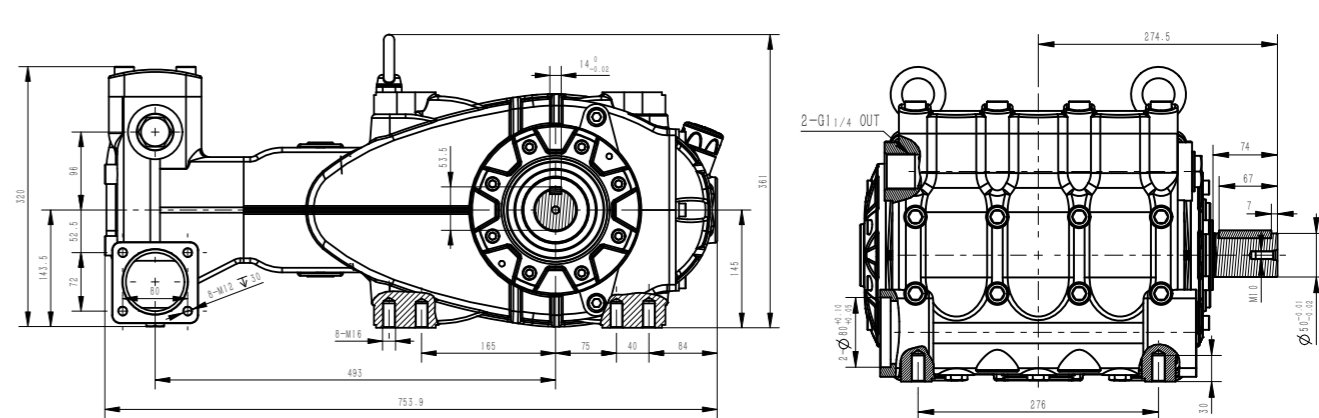
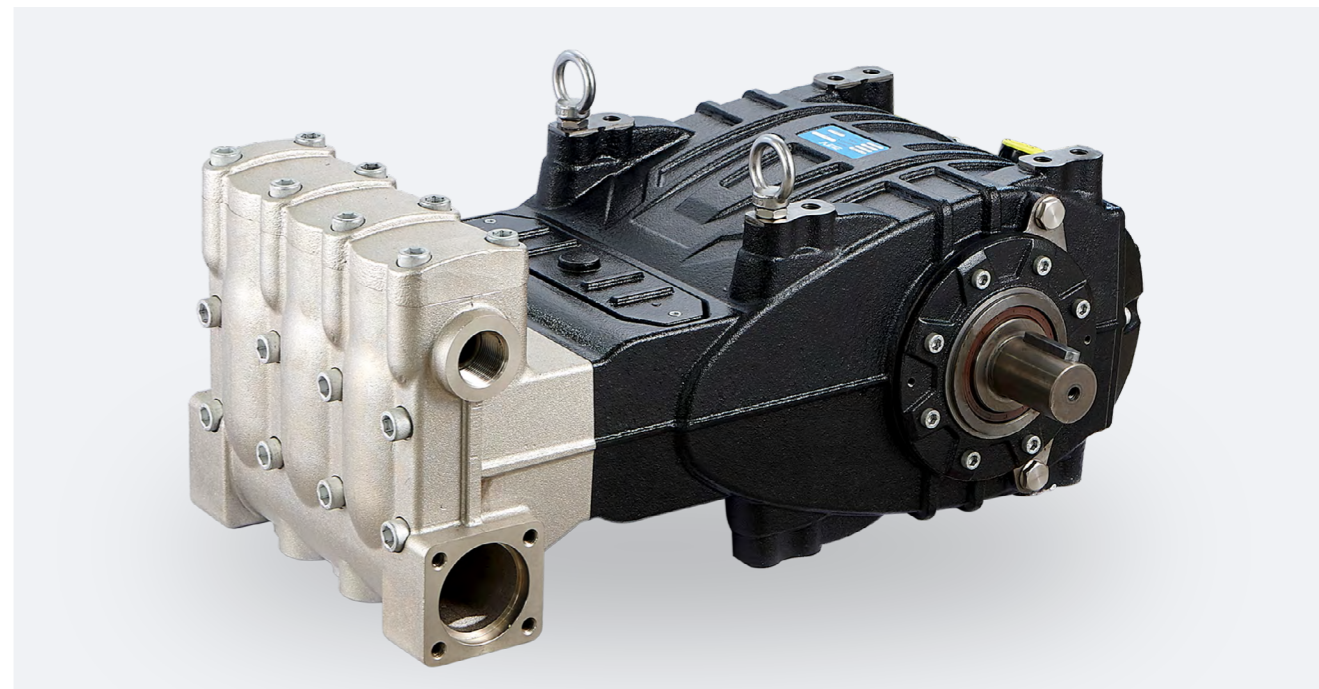
JPG SERIES



N 轴 $\Phi 50\text{mm}$

型号	流量		压力		功率		转速	柱塞直径	行程
Model	L/min	GPM	bar	psi	HP	kW	rpm	mm	mm
JPG32	168	44.9	250	3625	108.8	80.0	1000	32	70
JPG36	213	56.2	200	2900	110.4	81.1	1000	36	70
JPG40	263	69.5	160	2320	109.1	80.2	1000	40	70

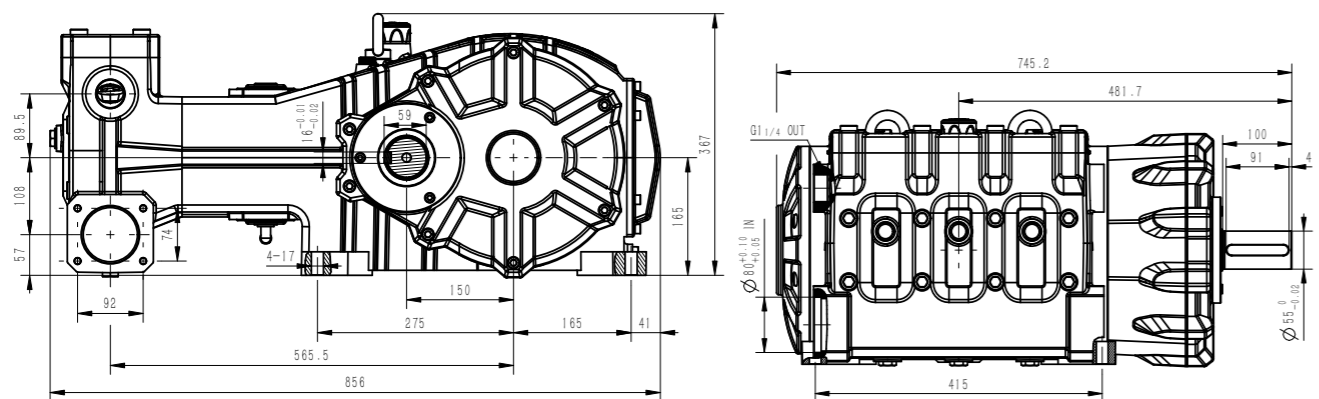
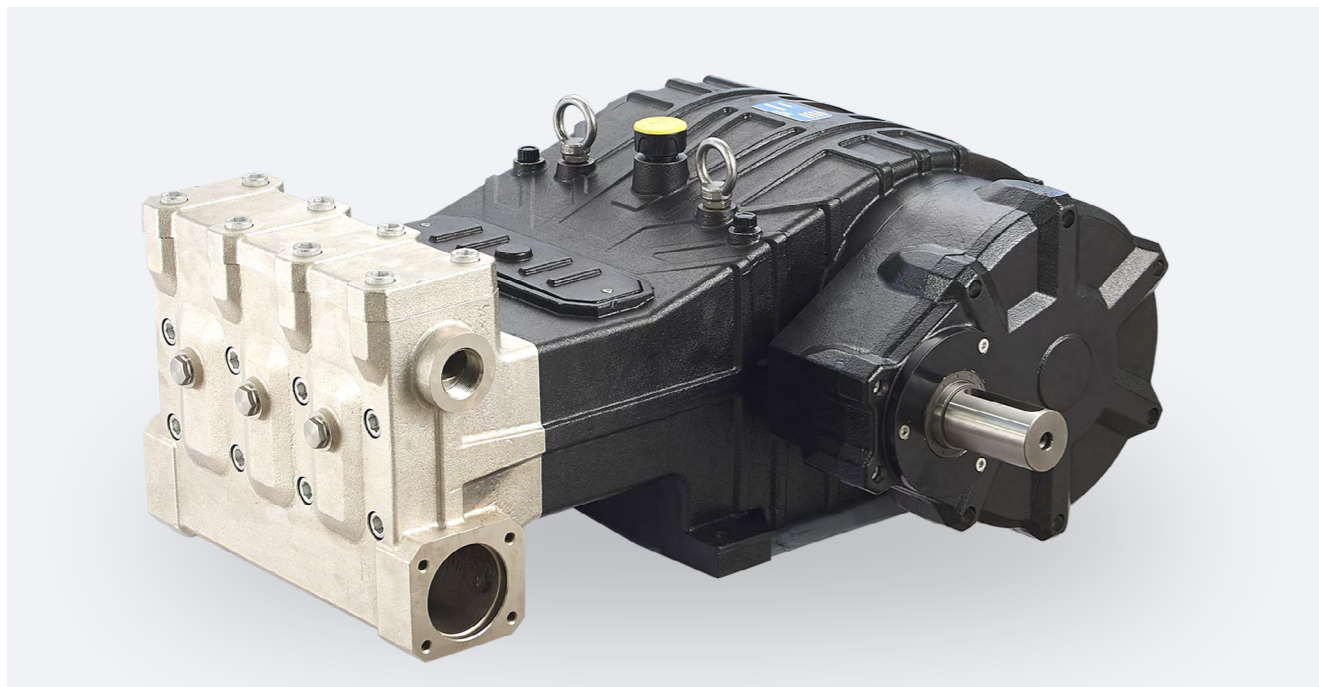
JPG SERIES



N 轴 $\Phi 50\text{mm}$

型号	流量		压力		功率		转速	柱塞直径	行程
Model	L/min	GPM	bar	psi	HP	kW	rpm	mm	mm
JPG45	333	88	100	1450	86.3	63.4	1000	45	70
JPG50	329	87.2	130	1885	110.8	81.5	800	50	70
JPG55	399	105.4	100	1450	103.4	76.0	800	52	70

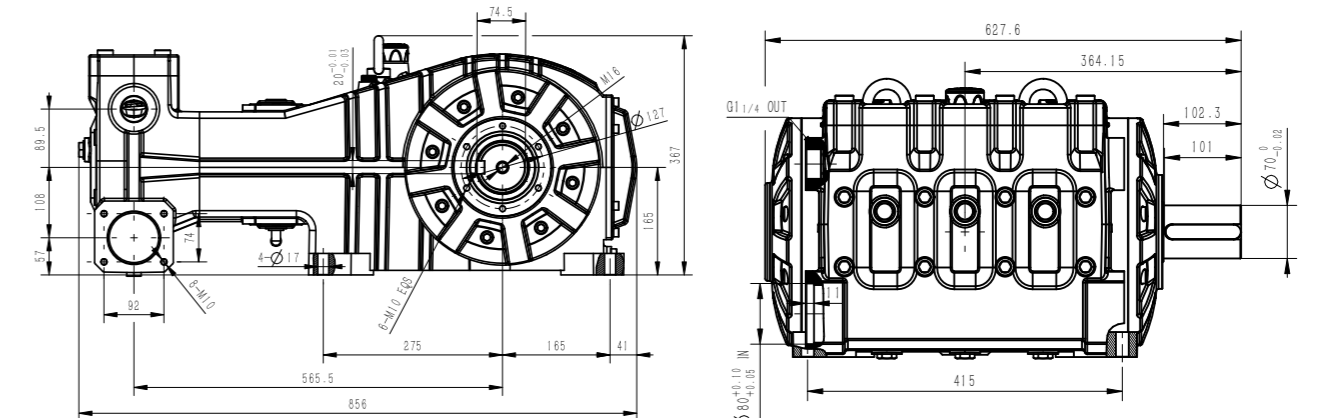
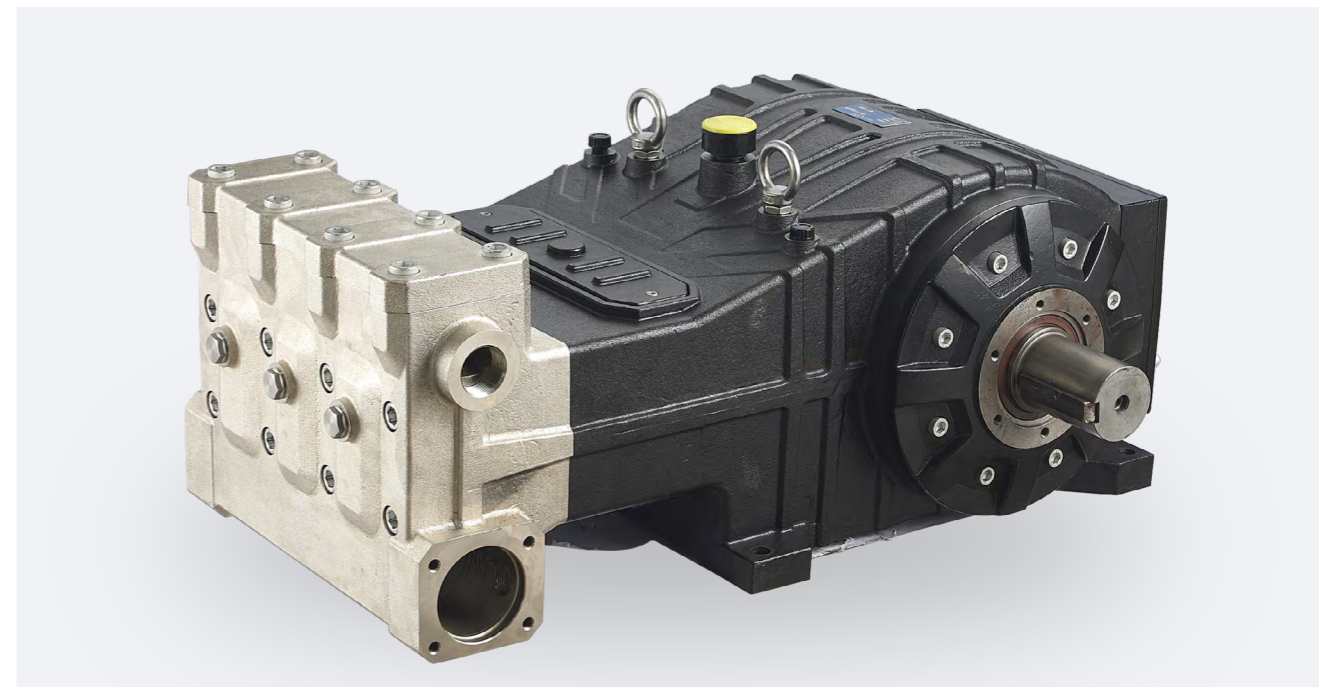
HW SERIES



N 轴 $\Phi 55\text{mm}$

型号	转速	流量		压力		功率		柱塞直径
Model	rpm	L/min	GPM	bar	psi	HP	kW	mm
HW40	1500(2.17)	187	49.4	350	5075	169.6	124.7	40
HW45	1500(2.17)	232	61.3	300	4350	180.4	132.6	45
HW50	1500(2.17)	287	75.8	250	3625	185.9	136.7	50
HW55	1500(2.17)	347	91.7	200	2900	179.9	132.2	55
HW60	1500(2.17)	413	109.1	170	2465	182.0	133.7	60
HW65	1500(2.17)	485	128.2	150	2175	188.5	138.6	65
HW70	1500(2.17)	574	151.8	100	1450	148.8	109.3	70

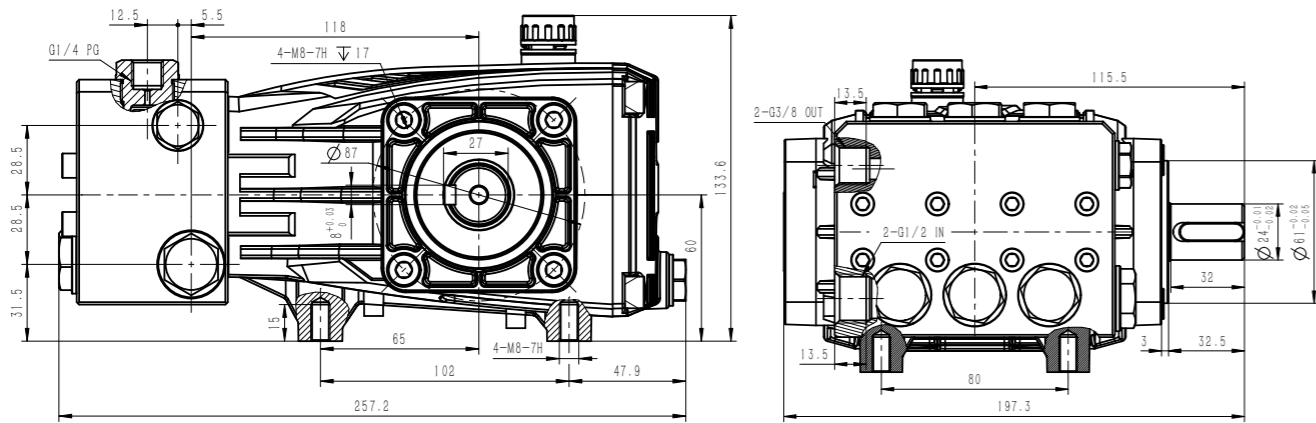
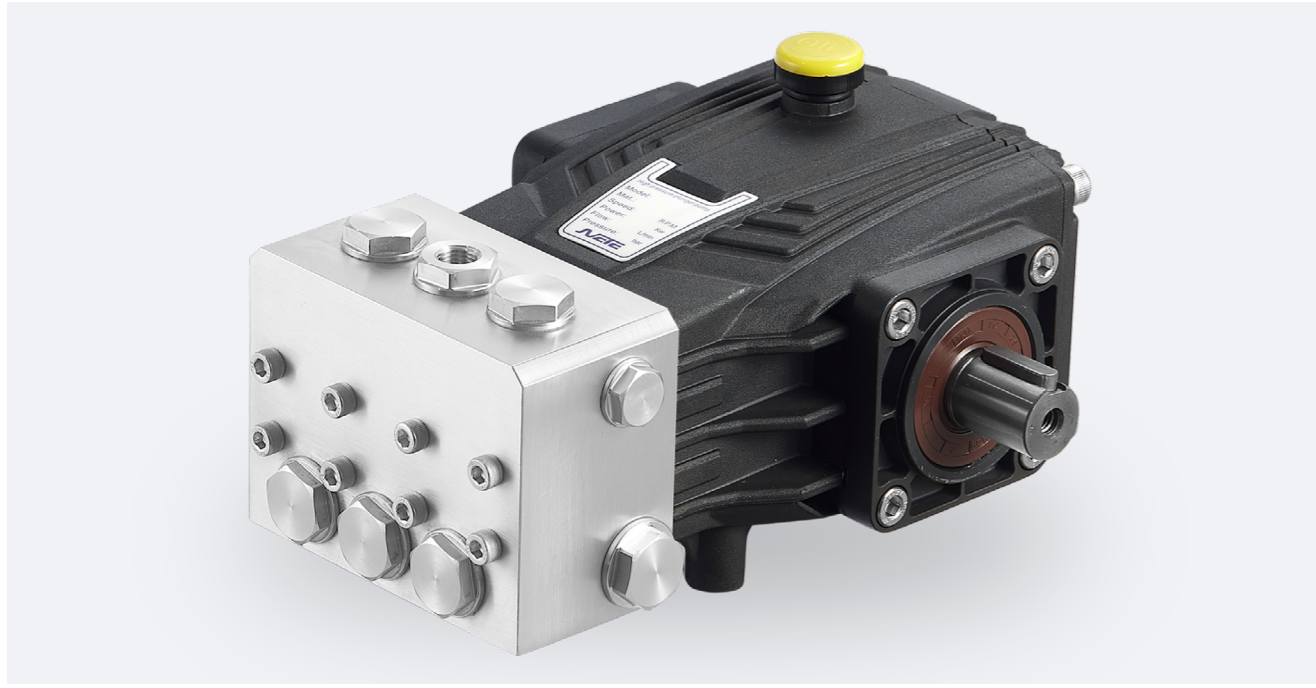
JPH SERIES



N 轴 $\Phi 55\text{mm}$

型号	转速	流量		压力		功率		柱塞直径
Model	rpm	L/min	GPM	bar	psi	HP	kW	mm
JPH40	750	203	53	280	4060	147	108	40
JPH45	750	257	68	220	3190	147	108	45
JPH50	750	318	84	180	2610	148	109	50
JPH55	750	385	101	150	2175	150	110	55
JPH60	750	458	121	130	1885	154	113	60
JPH65	750	537	142	100	1450	139	102	65
JPH70	750	623	165	80	1160	129	95	70

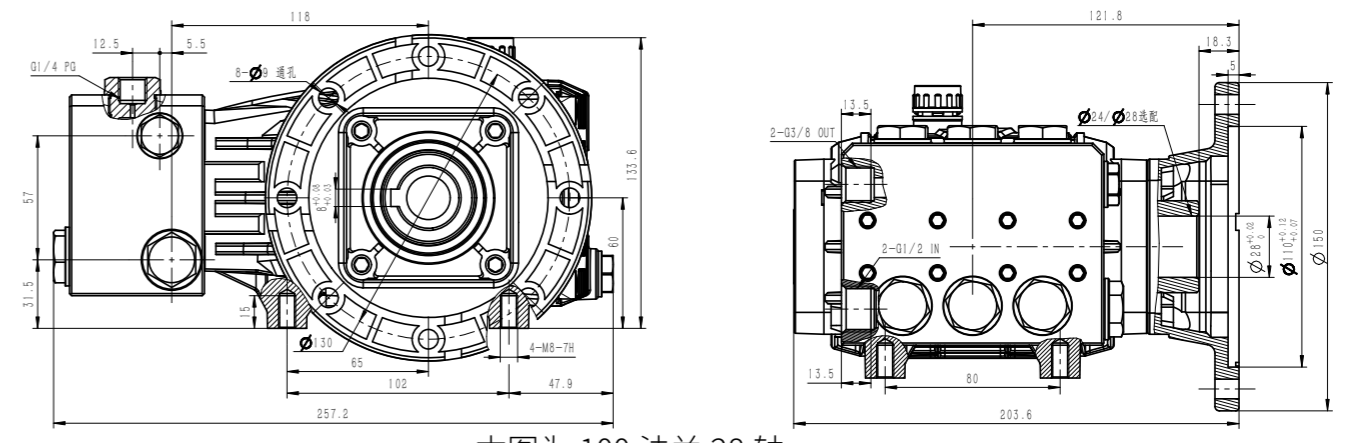
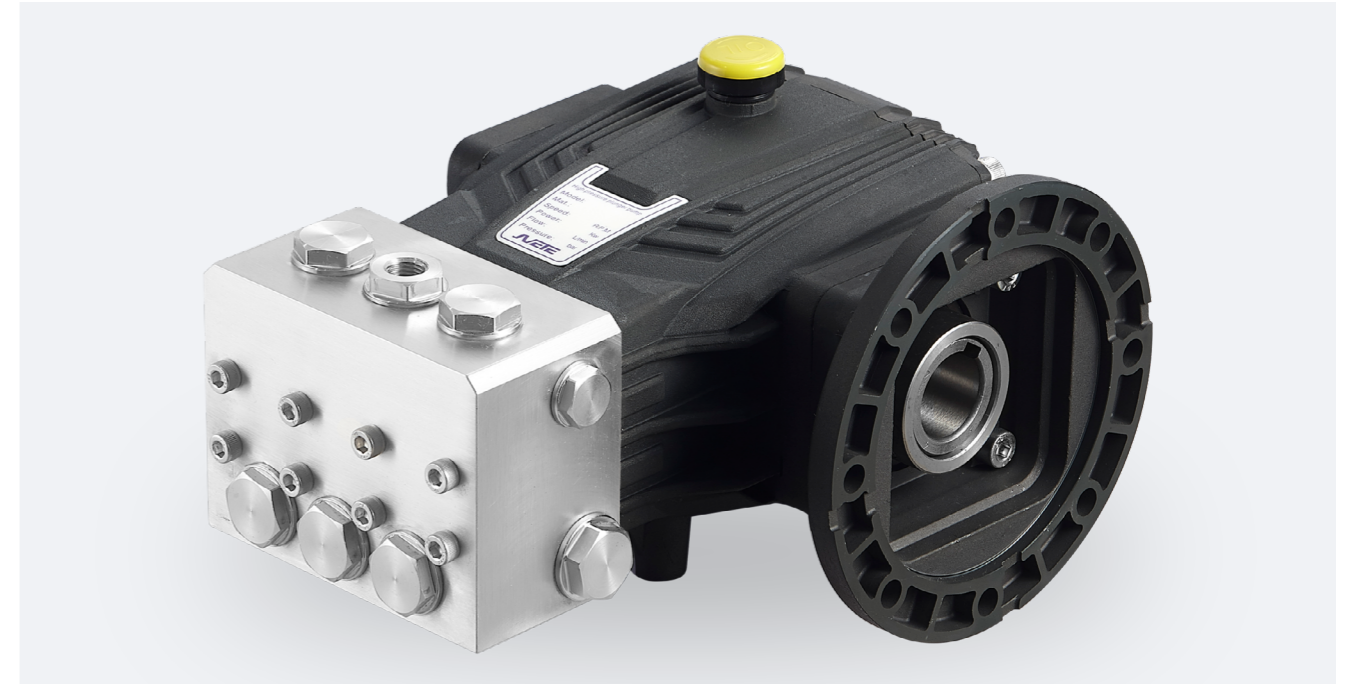
JPBF/JPBS SERIES



1450rpm N轴 $\Phi 24\text{mm}$ _ 2205 不锈防腐蚀泵

型号	流量		压力		功率		转速	柱塞直径	行程
Model	L/min	GPM	bar	psi	HP	kW	rpm	mm	mm
JPBF0510-N24	5	1.3	100	1450	1.3	1.0	1450	18	5
JPBF0810-N24	8	2.1	100	1450	2.1	1.5	1450	18	7
JPBF1110-N24	11	2.9	100	1450	2.9	2.1	1450	18	10
JPBF1310-N24	13	3.4	100	1450	3.4	2.5	1450	18	12
JPBF1510-N24	15	4	100	1450	3.9	2.9	1450	18	14

JPBF/JPBS SERIES

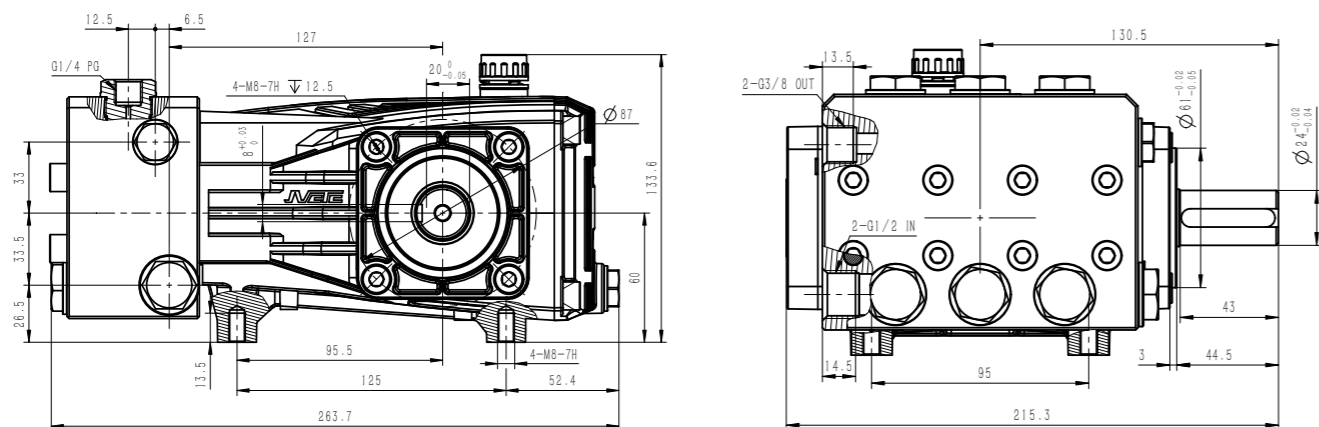
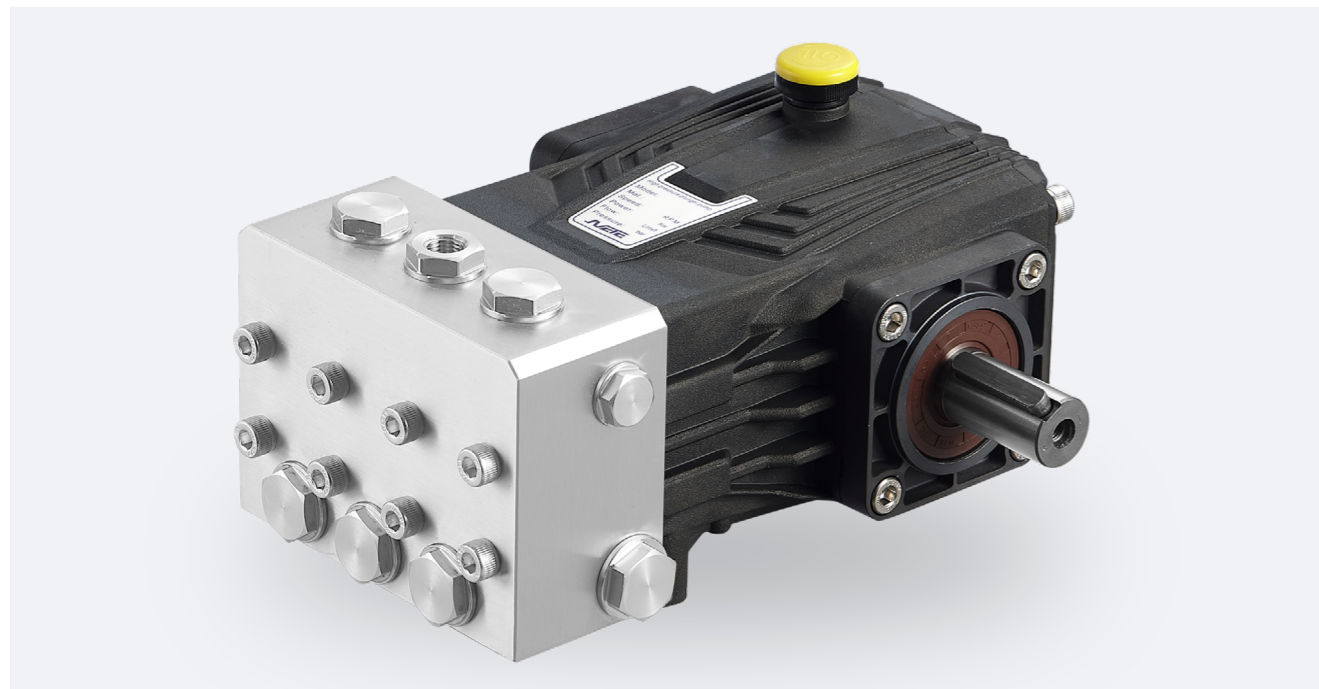


本图为 100 法兰 28 轴

1450rpm C轴 $\Phi 24\text{mm}/\Phi 28\text{mm}$ _ 连接法兰 90 或 100 根据泵型选配

型号	流量		压力		功率		转速	柱塞直径	行程
Model	L/min	GPM	bar	psi	HP	kW	rpm	mm	mm
JPBF0510-C24	5	1.3	100	1450	1.3	1.0	1450	18	5
JPBF0810-C24/C28	8	2.1	100	1450	2.1	1.5	1450	18	7
JPBF1110-C28	11	2.9	100	1450	2.9	2.1	1450	18	10
JPBF1310-C28	13	3.4	100	1450	3.4	2.5	1450	18	12
JPBF1510-C24/C28	15	4	100	1450	3.9	2.9	1450	18	14

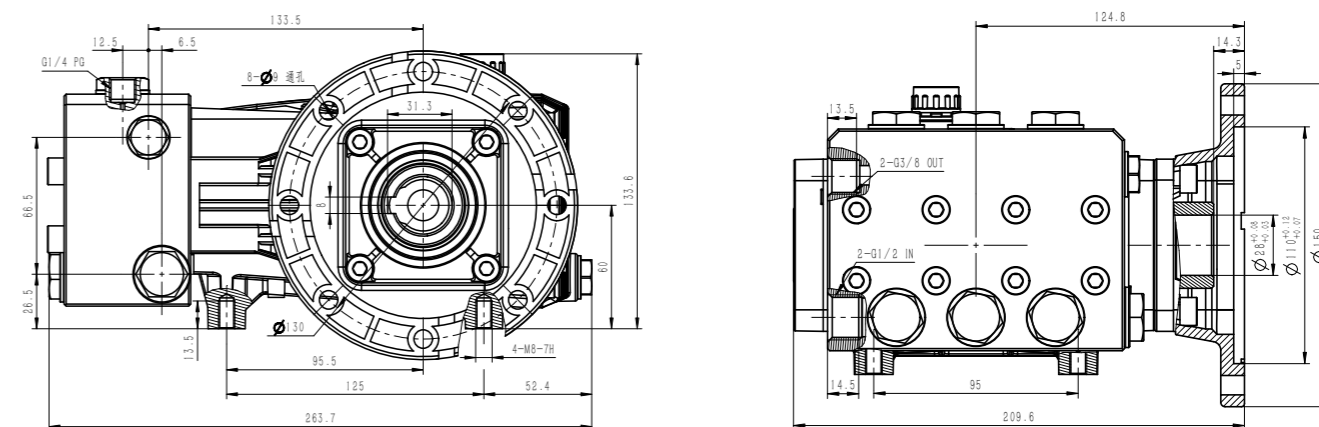
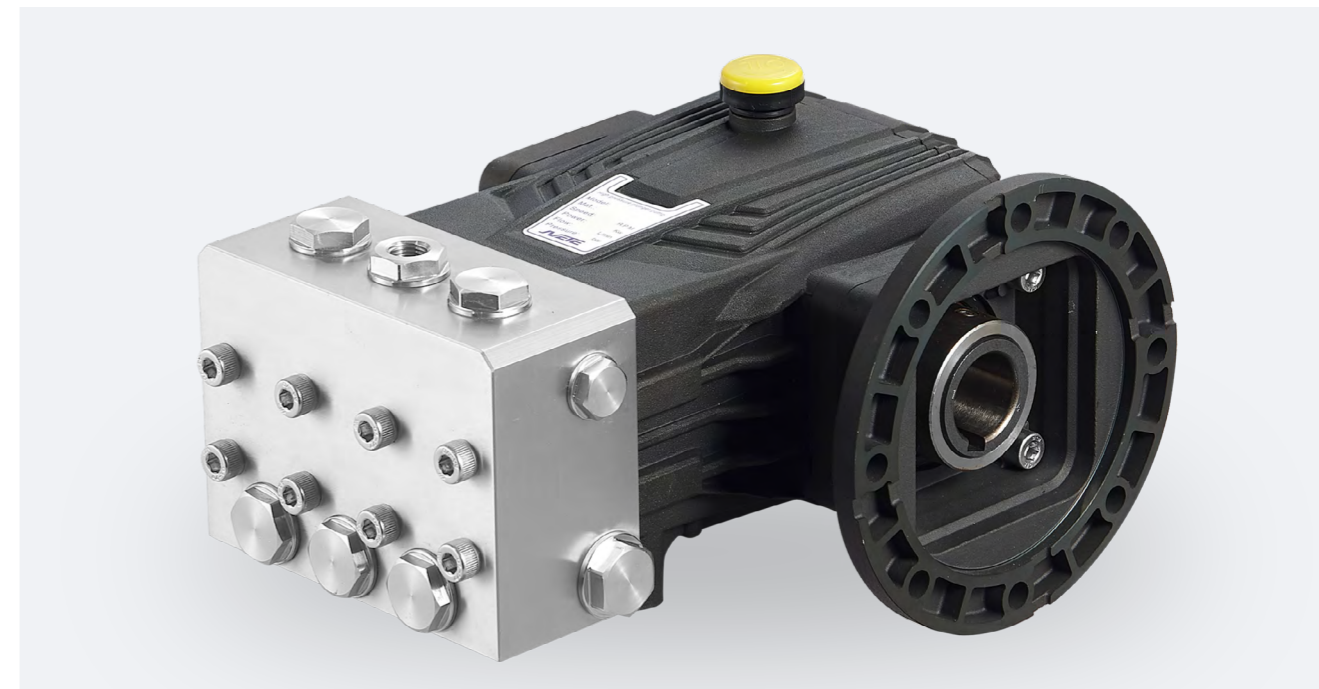
JPCF/JPCS SERIES



1450rpm N轴 $\Phi 24\text{mm}$ _ 2205/304 不锈钢防腐泵

型号	流量		压力		功率		转速	柱塞直径	行程
Model	L/min	GPM	bar	psi	HP	kW	rpm	mm	mm
JPCF1120-N24	11	2.9	200	2900	5.7	4.2	1450	18	10
JPCF1520-N24	15	4	200	2900	7.8	5.7	1450	18	14
JPCF1920-N24	19	5	200	2900	9.8	7.2	1450	20	14
JPCF2315-N24	23	6.1	150	2175	8.9	6.6	1450	22	14
JPCS1135-N24	11	2.9	350	5075	10.0	7.3	1450	18	10
JPCS1535-N24	15	4	350	5075	13.6	10.0	1450	18	14
JPCS1935-N24	19	5	350	5075	17.2	12.7	1450	20	14
JPCS2330-N24	23	6.1	300	4350	17.9	13.1	1450	22	14

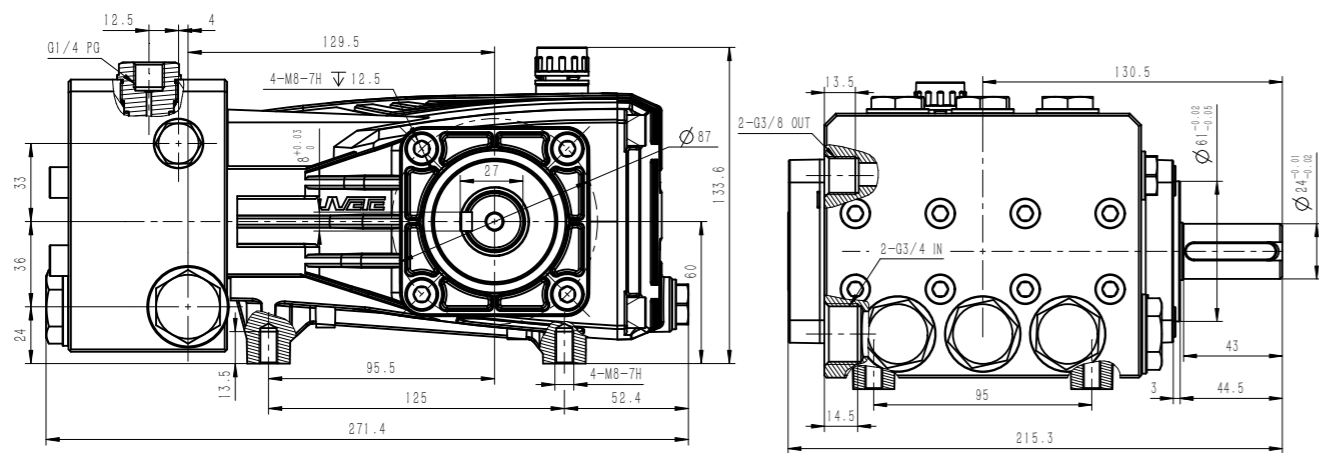
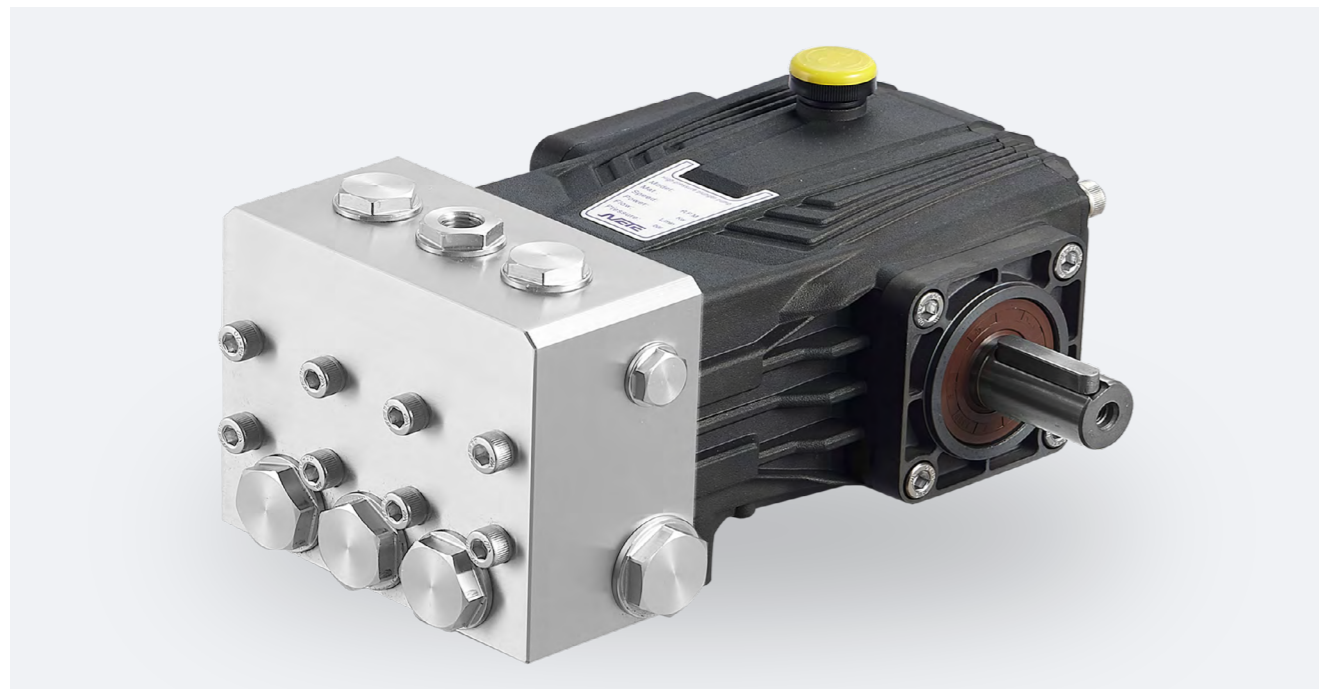
JPCF/JPCS SERIES



1450rpm C轴 $\Phi 28\text{mm}$ _ 2205/304 不锈钢防腐泵

型号	流量		压力		功率		转速	柱塞直径	行程
Model	L/min	GPM	bar	psi	HP	kW	rpm	mm	mm
JPCF1120-C28	11	2.9	200	2900	5.7	4.2	1450	18	10
JPCF1520-C28	15	4	200	2900	7.8	5.7	1450	18	14
JPCF1920-C28	19	5	200	2900	9.8	7.2	1450	20	14
JPCF2315-C28	23	6.1	150	2175	8.9	6.6	1450	22	14
JPCS1135-C28	11	2.9	350	5075	10.0	7.3	1450	18	10
JPCS1535-C28	15	4	350	5075	13.6	10.0	1450	18	14
JPCS1935-C28	19	5	350	5075	17.2	12.7	1450	20	14
JPCS2330-C28	23	6.1	300	4350	17.9	13.1	1450	22	14

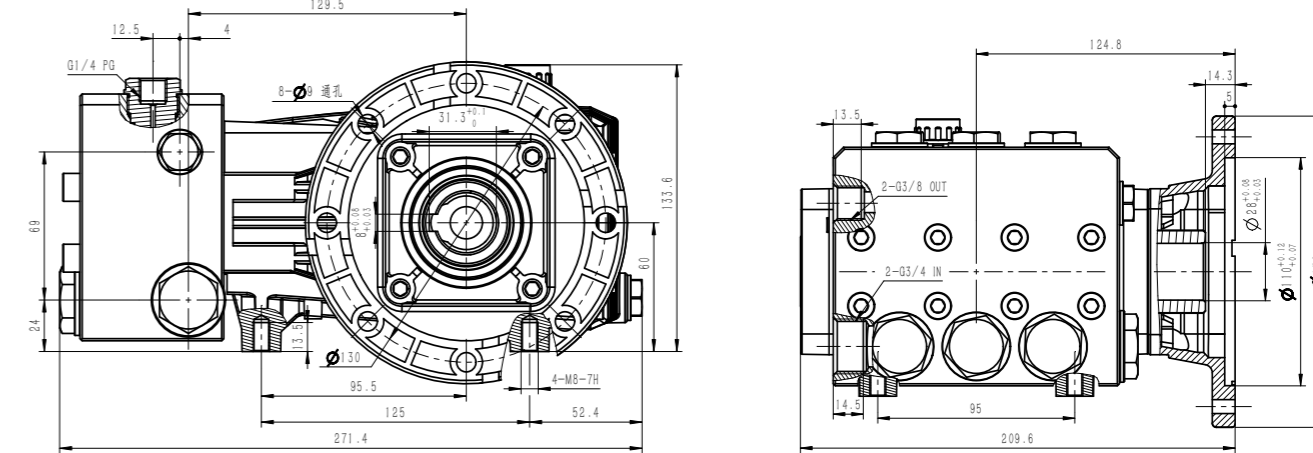
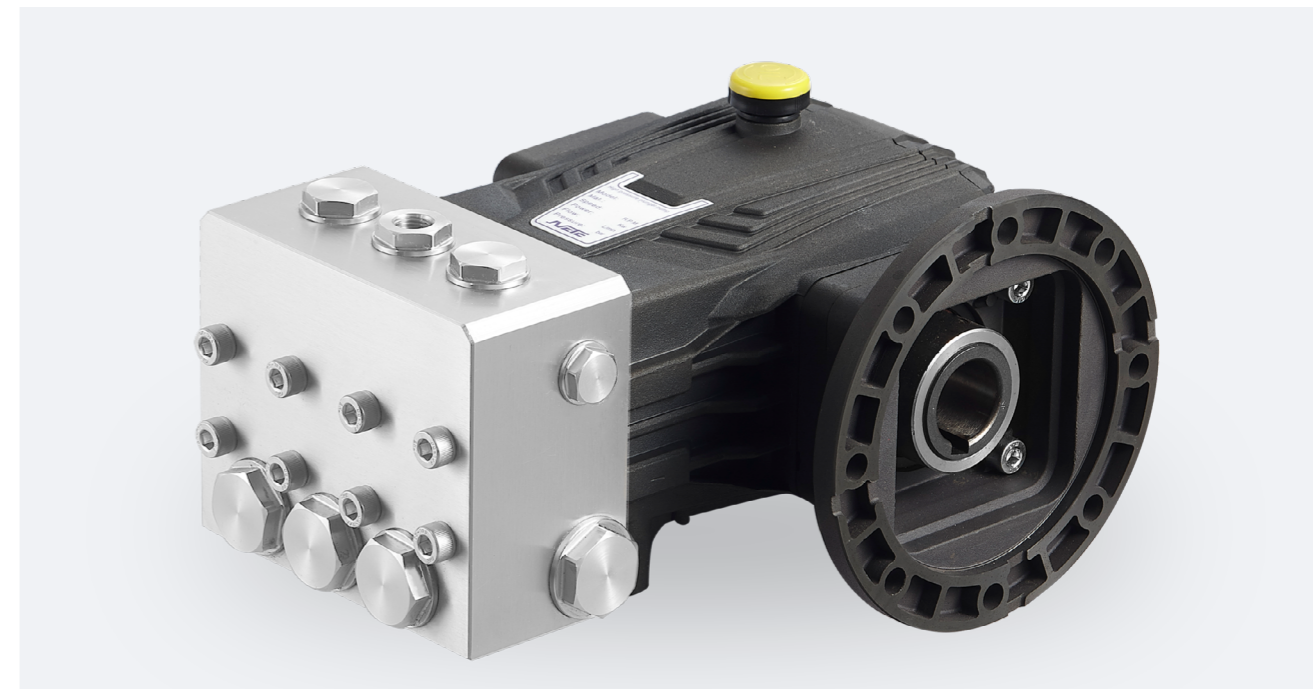
JPCF/JPCS SERIES



1450rpm N轴 $\Phi 24\text{mm}$ _ 2205/304 不锈防腐蚀泵

型号	流量		压力		功率		转速	柱塞直径	行程
Model	L/min	GPM	bar	psi	HP	kW	rpm	mm	mm
JPCF3010-N24	30	7.9	100	1450	7.8	5.7	1450	25	14
JPCF3510-N24	35	9.25	100	1450	9.1	6.7	1450	25	16.5
JPCS3010-N24	30	7.9	100	1450	7.8	5.7	1450	25	14
JPCS3510-N24	35	9.25	100	1450	9.1	6.7	1450	25	16.5

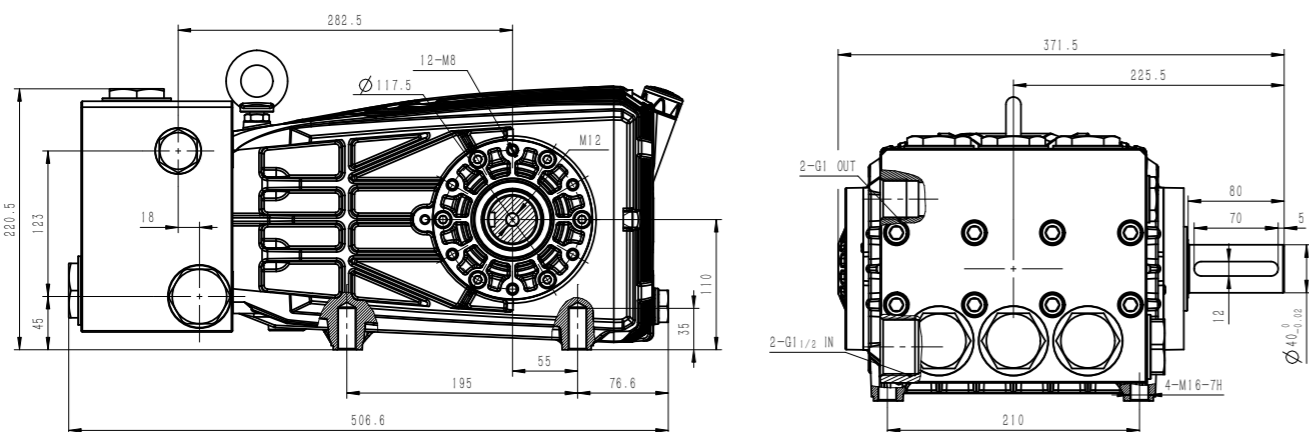
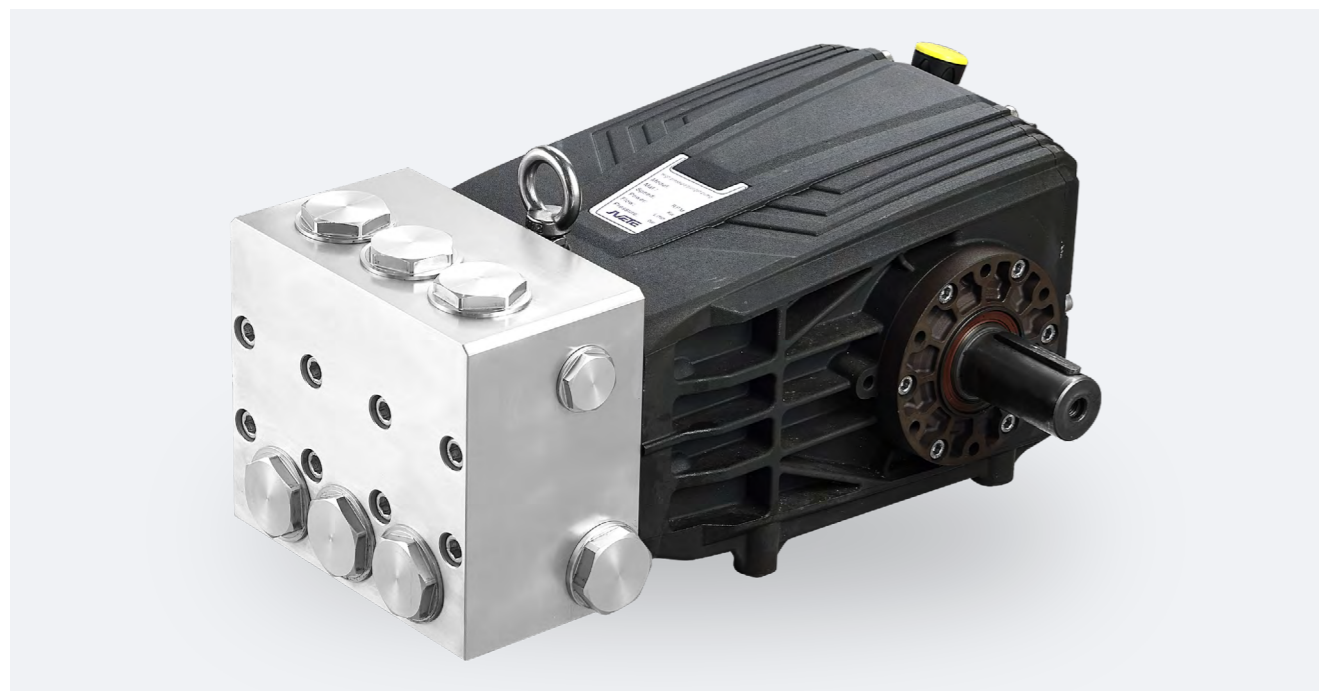
JPCF/JPCS SERIES



1450rpm C轴 $\Phi 28\text{mm}$ _ 2205/304 不锈防腐蚀泵

型号	流量		压力		功率		转速	柱塞直径	行程
Model	L/min	GPM	bar	psi	HP	kW	rpm	mm	mm
JPCF3010-C28	30	7.9	100	1450	7.8	5.7	1450	25	14
JPCF3510-C28	35	9.25	100	1450	9.1	6.7	1450	25	16.5
JPCS3010-C28	30	7.9	100	1450	7.8	5.7	1450	25	14
JPCS3510-C28	35	9.25	100	1450	9.1	6.7	1450	25	16.5

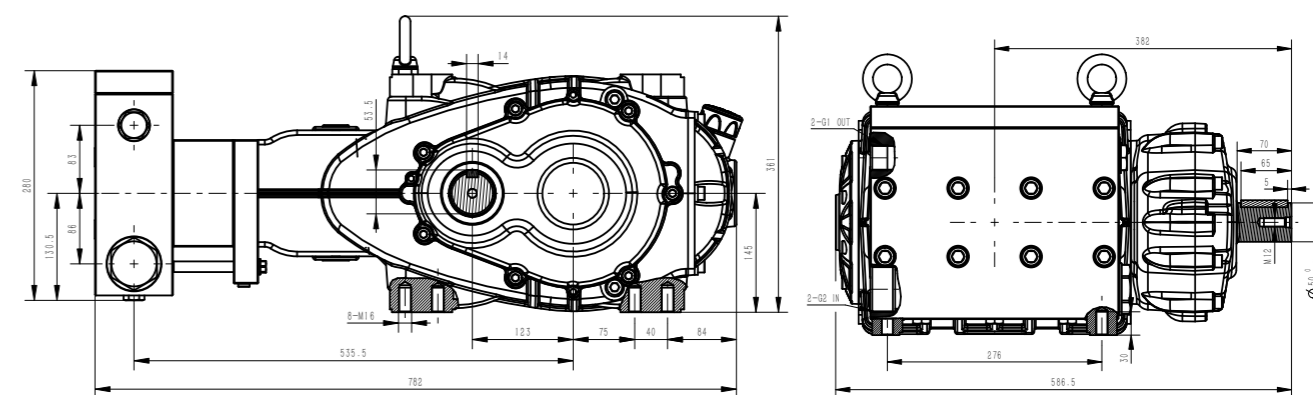
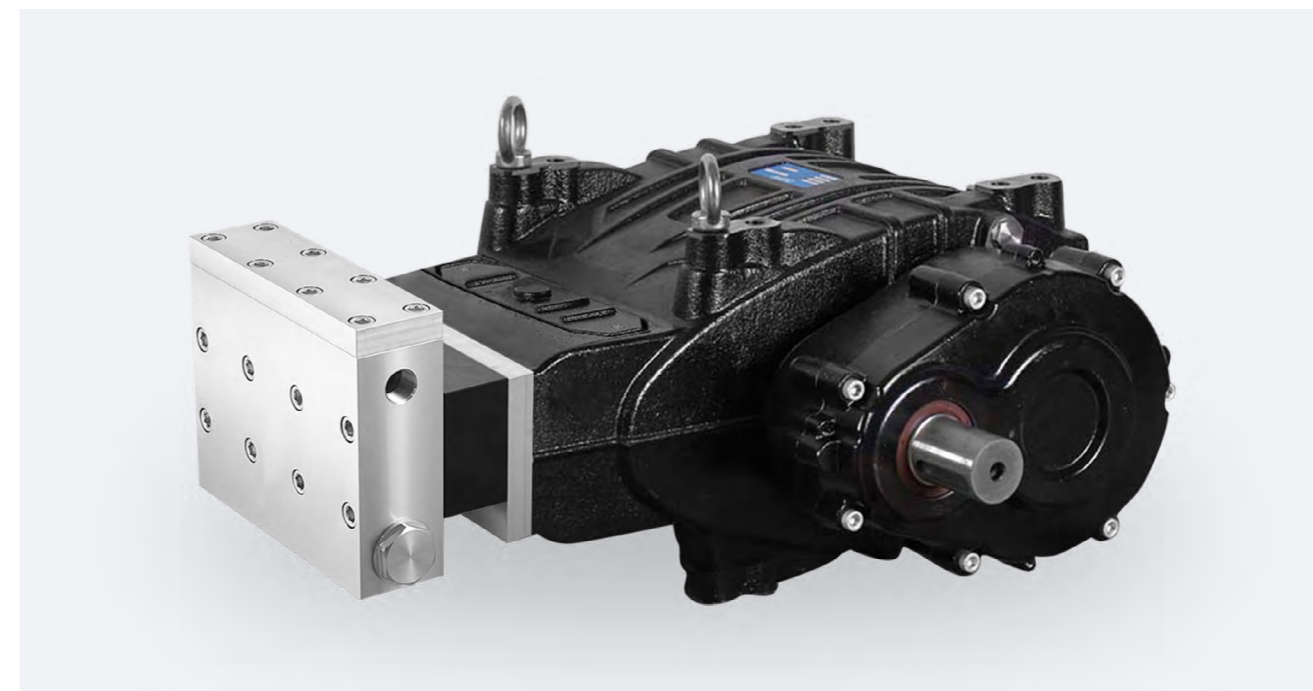
JPFF/JPFS SERIES



2205/304 不锈防腐蚀泵

型号	流量		压力		功率		转速	柱塞直径	行程
Model	L/min	GPM	bar	psi	HP	kW	rpm	mm	mm
JPFF32	120	31.7	100	1450	31.1	22.9	1000	32	50
JPFF36	152	40.1	100	1450	39.4	29.0	1000	36	50
JPFF40	188	49.6	100	1450	48.7	35.8	1000	40	50
JPFS32	120	31.7	160	2320	49.8	36.6	1000	32	50
JPFS36	152	40.1	130	1885	51.2	37.6	1000	36	50
JPFS40	188	49.6	110	1595	53.6	39.4	1000	40	50

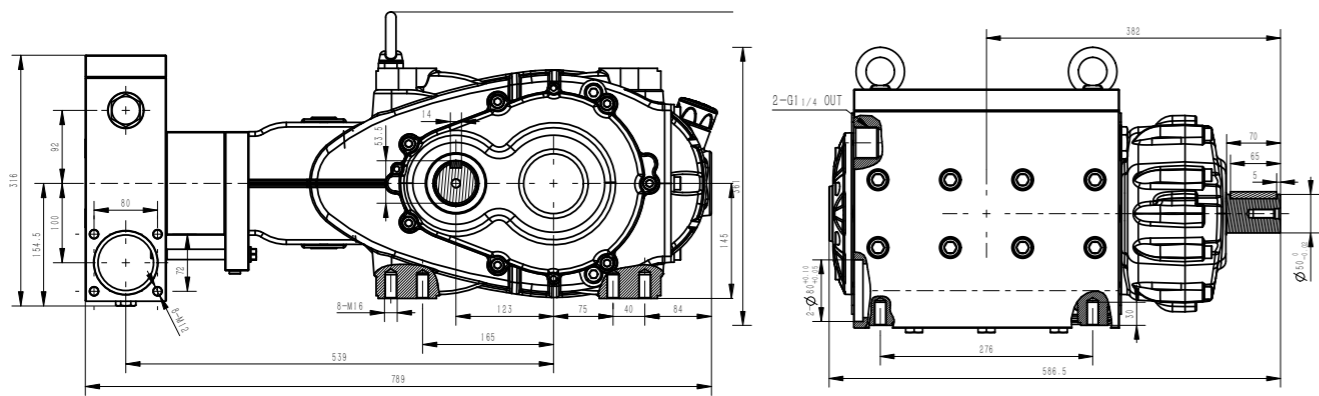
GWF/GWS SERIES



2205/304 不锈防腐蚀泵

型号	流量		压力		功率		转速	柱塞直径	行程
Model	L/min	GPM	bar	psi	HP	kW	rpm	mm	mm
GWF32	138	35.6	200	2900	71.5	52.6	1500	32	70
GWF36	171	45.2	200	2900	88.6	65.1	1500	36	70
GWF40	211	55.7	150	2175	82.0	60.3	1500	40	70
GWS32	138	35.6	300	4350	107.3	78.9	1500	32	70
GWS36	171	45.2	220	3190	97.5	71.7	1500	36	70
GWS40	211	55.7	180	2610	98.4	72.3	1500	40	70

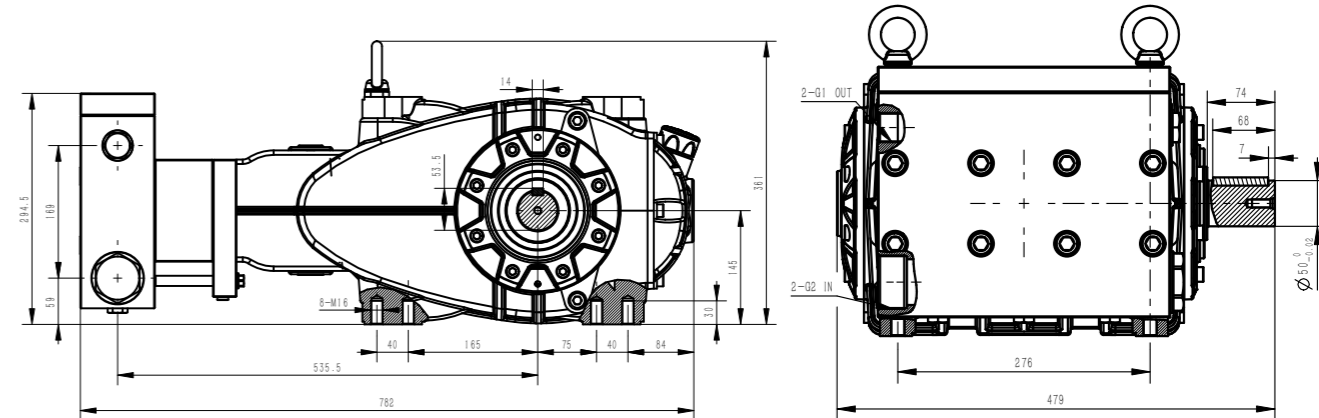
GWF/GWS SERIES



2205/304 不锈防腐蚀泵

型号	流量		压力		功率		转速	柱塞直径	行程
Model	L/min	GPM	bar	psi	HP	kW	rpm	mm	mm
GWF45	267	70.5	150	2175	103.8	76.3	1500	45	70
GWF50	330	87.2	100	1450	85.5	62.9	1500	50	70
GWF55	399	105.4	100	1450	103.4	76.0	1500	52	70

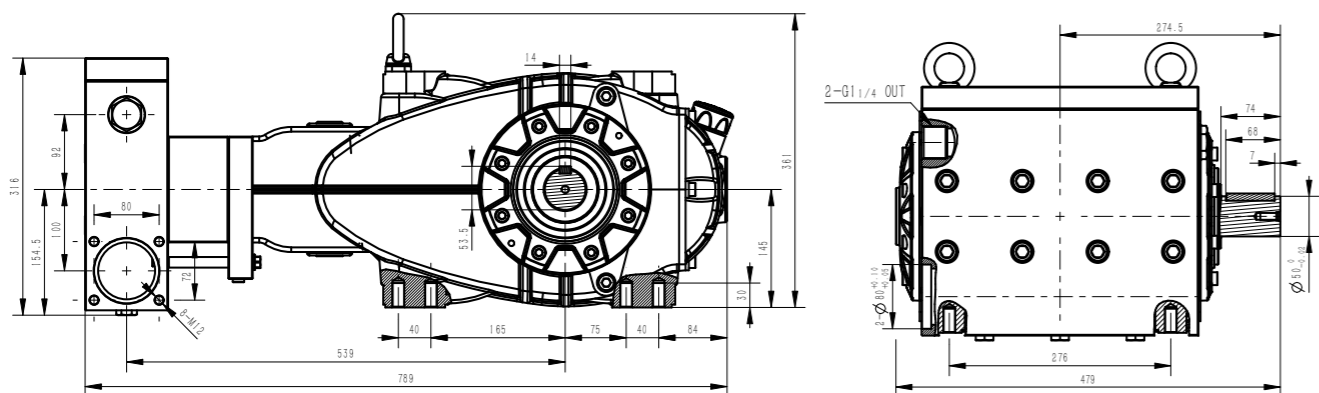
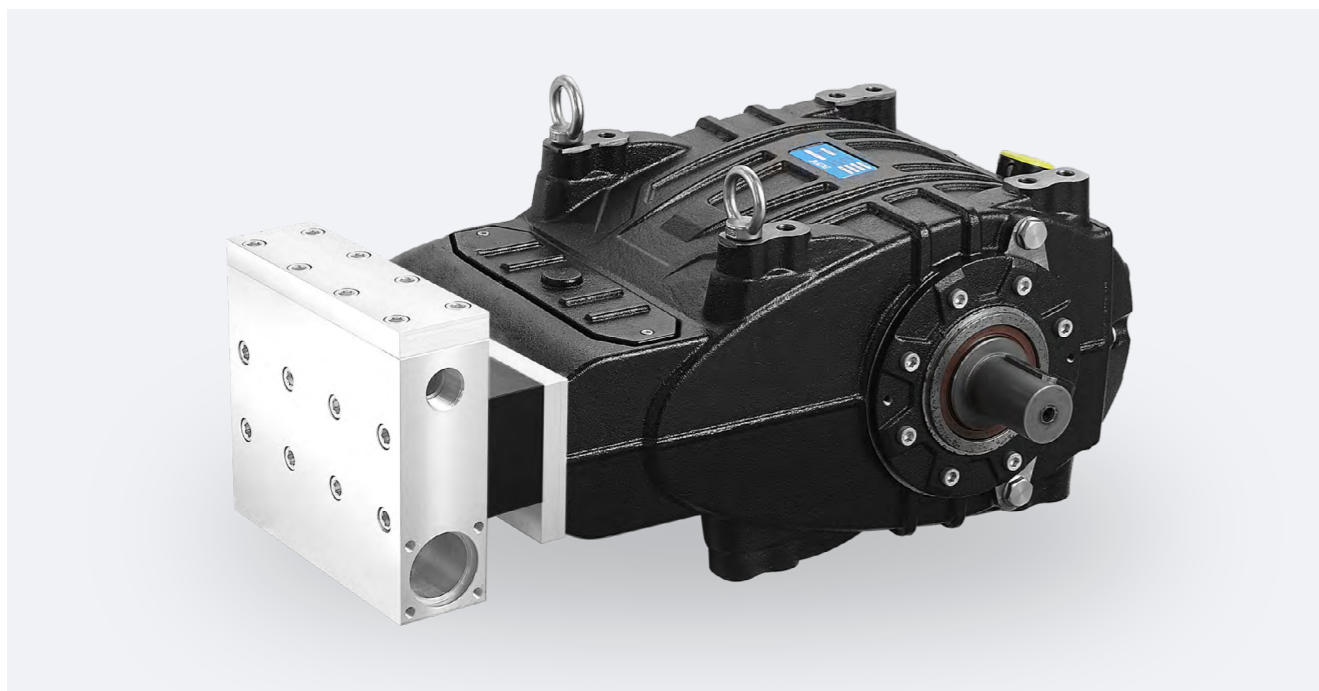
JPGF SERIES



2205/304 不锈防腐蚀泵

型号	流量		压力		功率		转速	柱塞直径	行程
Model	L/min	GPM	bar	psi	HP	kW	rpm	mm	mm
JPGF32	168	44.9	200	2900	87	64	1000	32	70
JPGF36	213	56.2	200	2900	113	83	1000	36	70
JPGF40	263	69.5	150	2175	102	75	1000	40	70

JPGF SERIES

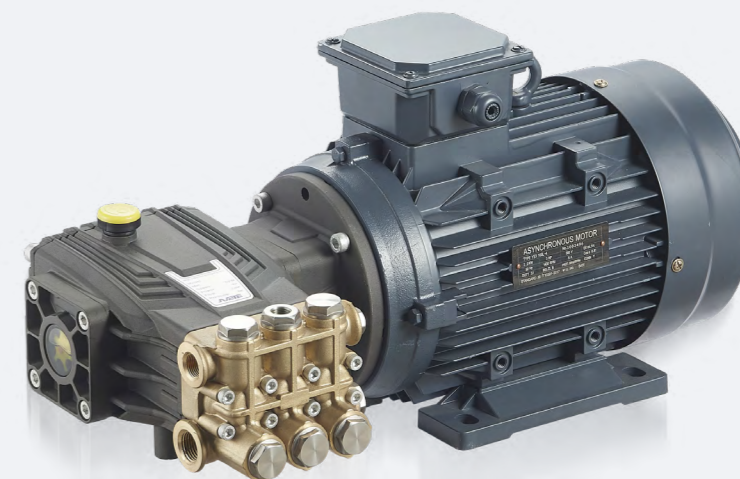


2205/304 不锈防腐蚀泵

型号	流量		压力		功率		转速	柱塞直径	行程
Model	L/min	GPM	bar	psi	HP	kW	rpm	mm	mm
JPGF45	267	70	100	1450	69	50	800	45	70
JPGF50	329	86.9	100	1450	86	63	800	50	70
JPGF55	398	105	100	1450	103	76	800	52	70

EJPB-C SERIES

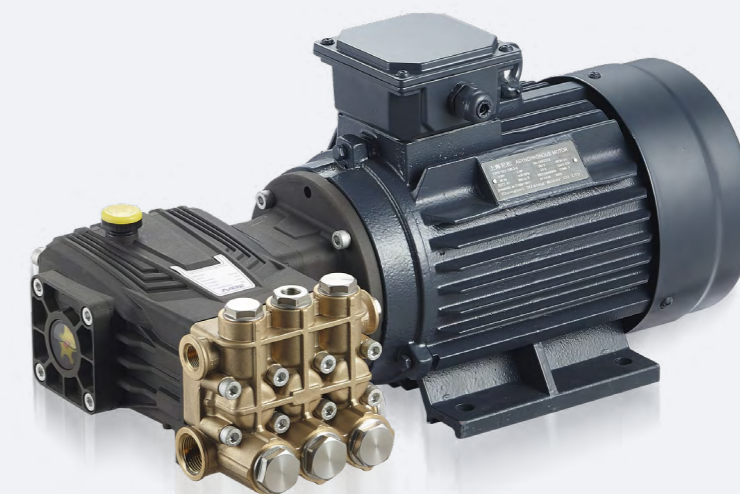
电机连泵



型号	流量		压力		功率		转速	电源
Model	L/min	GPM	bar	psi	HP	kW	rpm	V/Hz
EJPB0510-C 24	5	1.3	100	1450	1.3	1.0	1450	220/50
EJPB0818-C 24/C28	8	2.1	180	2610	3.7	2.7	1450	220/50
EJPB1120-C 28	11	2.9	200	2900	5.7	4.2	1450	380/50
EJPB1320-C28	13	3.4	200	2900	6.7	5.0	1450	380/50
EJPB1520-C 24/C28	15	4	200	2900	7.8	5.7	1450	380/50
EJPB1910-C 24/C28	19	5	100	1450	4.9	3.6	1450	380/50

EJPC-C SERIES

电机连泵



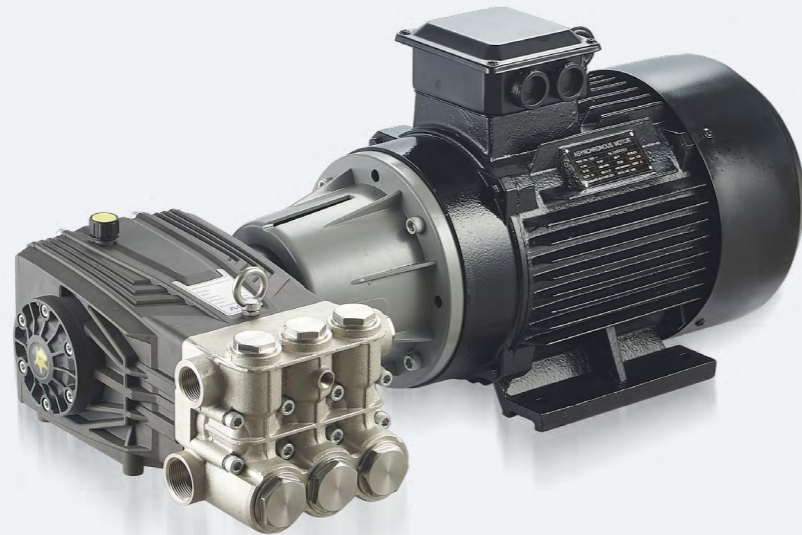
型号	流量		压力		功率		转速	电源
Model	L/min	GPM	bar	psi	HP	kW	rpm	V/Hz
EJPC1120-C 28	11	2.9	200	2900	5.7	4.2	1450	380/50
EJPC1520-C 28	15	4.0	200	2900	7.8	5.7	1450	380/50
EJPC1920-C 28	19	5.0	200	2900	9.8	7.2	1450	380/50
EJPC2320-C 28	23	6.1	200	2900	11.9	8.8	1450	380/50
EJPC3010-C 28	30	7.9	100	1450	7.8	5.7	1450	380/50
EJPC3510-C 28	35	9.2	100	1450	9.1	6.7	1450	380/50
EJPCH1135-C 28	11	2.9	350	5075	10.0	7.3	1450	380/50
EJPCH1935-C 28	19	5.0	350	5075	17.2	12.7	1450	380/50
EJPCH2330-C 28	23	6.1	300	4350	17.9	13.1	1450	380/50

EJPD-C SERIES _ 电机连泵



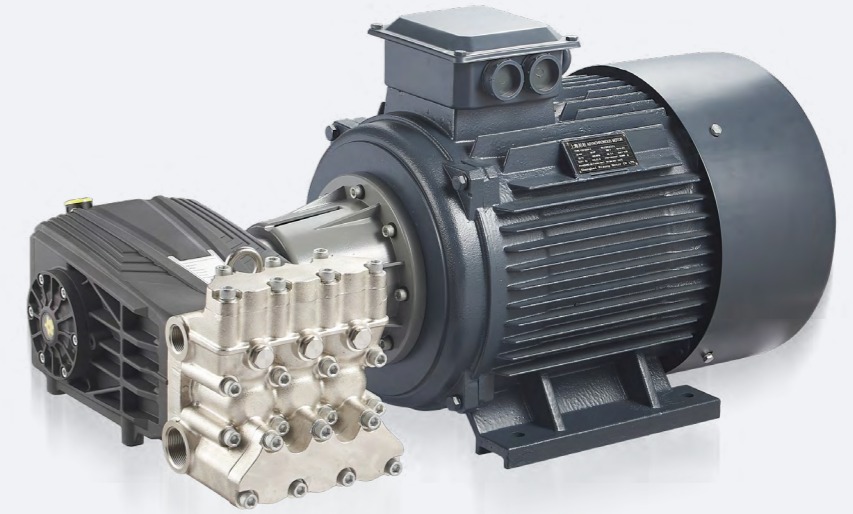
型号	流量		压力		功率		转速	电源
Model	L/min	GPM	bar	psi	HP	kW	rpm	V/HZ
EJPD3020	30	7.93	200	2900	15.5	11.4	1450	380/50
EJPD4020	40	10.6	200	2900	20.7	15.2	1450	380/50
EJPD5615	56	14.8	150	2175	21.8	16.0	1450	380/50

EJPE SERIES _ 电机连泵



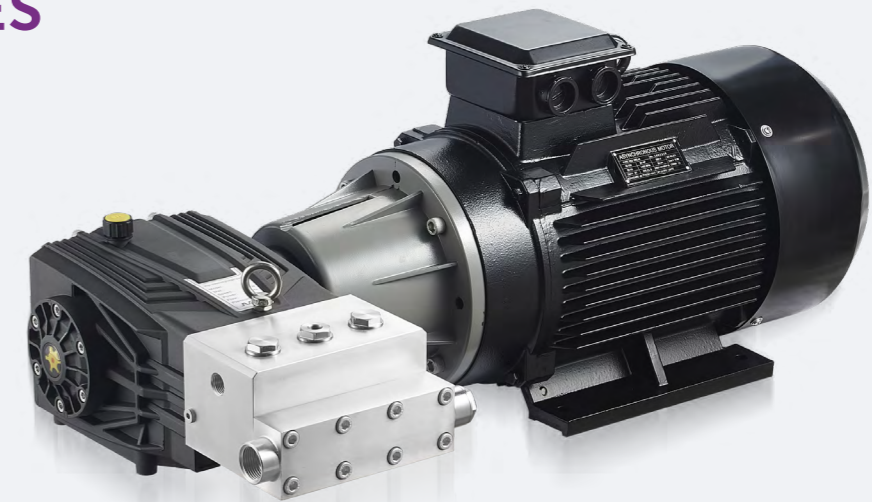
型号	流量		压力		功率		转速	电源
Model	L/min	GPM	bar	psi	HP	kW	rpm	V/HZ
EJPE32	96	25.4	180	2610	44.8	32.9	1450	380/50
EJPE36	121	32	130	1885	40.8	30.0	1450	380/50
EJPE40	150	39.6	100	1450	38.9	28.6	1450	380/50
EJPE45	131	34.6	100	1450	33.9	25.0	1000	380/50
	105	27.7	100	1450	27.2	20.0	800	

EJPF SERIES _ 电机连泵



型号	流量		压力		功率		转速	电源
Model	L/min	GPM	bar	psi	HP	kW	rpm	V/HZ
EJPF32	120	31.7	160	2320	49.8	36.6	1000	380/50
EJPF36	152	40.1	130	1885	51.2	37.6	1000	380/50
EJPF40	188	49.6	110	1595	53.6	39.4	1000	380/50

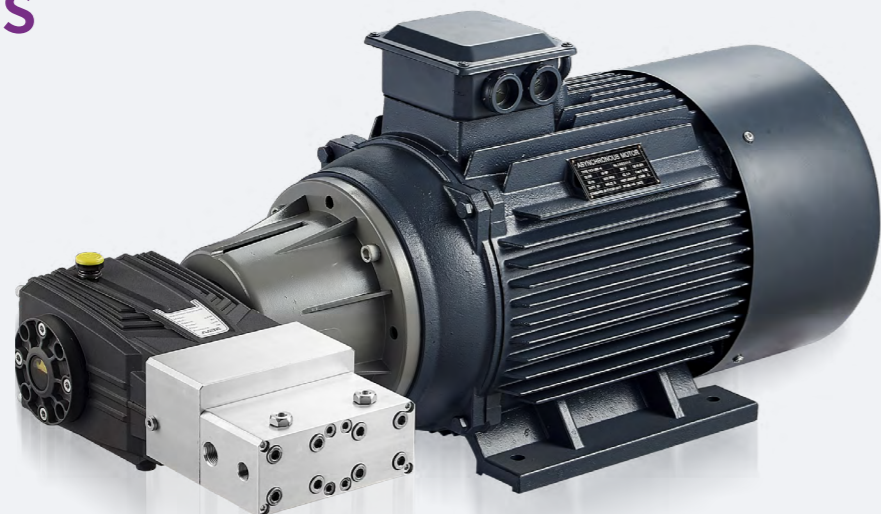
EJPES SERIES _ 电机连泵



型号	流量		压力		功率		转速	电源
Model	L/min	GPM	bar	psi	HP	kW	rpm	V/HZ
EJPES16	24	6.3	700	10150	43.5	32.0	1450	380/50
EJPES18	30	7.9	600	8700	46.6	34.3	1450	380/50
EJPES20	37	9.9	500	7250	47.9	35.2	1450	380/50
EJPES22	45	11.9	400	5800	46.6	34.3	1450	380/50
EJPES25	58	15.3	300	4350	45.1	33.1	1450	380/50
EJPES28	73	19.3	280	4060	53.0	38.9	1450	380/50
EJPES30	85	22.4	200	2900	44.1	32.4	1450	380/50

EJPDT SERIES

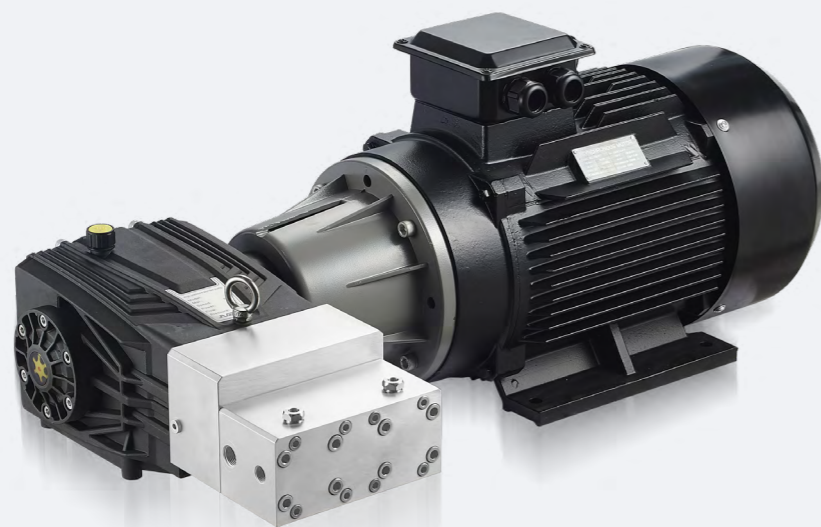
_ 电机连泵



型号	流量		压力		功率		转速	电源
Model	L/min	GPM	bar	psi	HP	kW	rpm	V/HZ
EJPDT10	6	1.6	1500	21750	23.3	17.1	1450	380/50
EJPDT12	8	2.1	1200	17400	24.9	18.3	1450	380/50
EJPDT16	18	4.8	800	11600	37.3	27.4	1450	380/50

EJPET SERIES

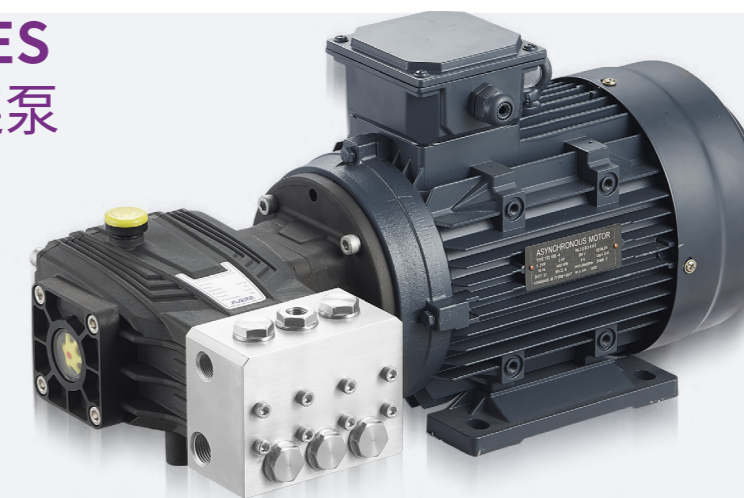
_ 电机连泵



型号	流量		压力		功率		转速	电源
Model	L/min	GPM	bar	psi	HP	kW	rpm	V/HZ
EJPET10A	9	2.38	1500	21750	35.0	25.7	1450	380/50
EJPET12A	13.5	3.57	1500	21750	52.5	38.6	1450	380/50
EJPET14A	18	4.76	1000	14500	46.6	34.3	1450	380/50
EJPET16A	24	6.34	900	13050	56.0	41.1	1450	380/50
EJPET18A	30	7.94	750	10875	58.3	42.9	1450	380/50

EJPBF-C SERIES

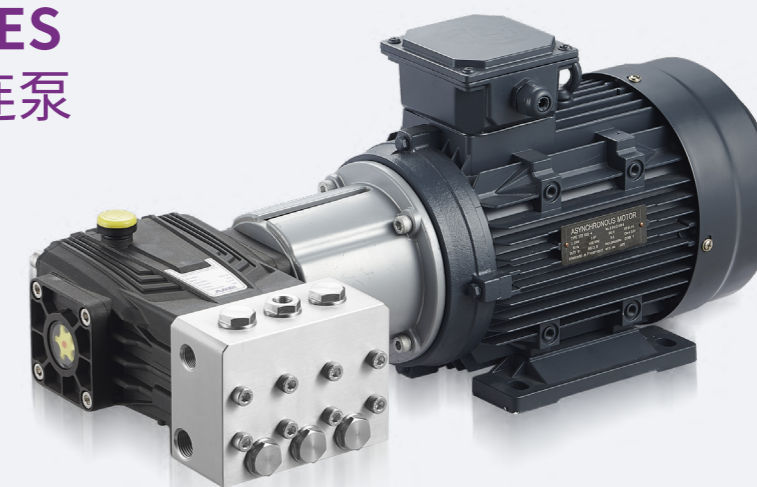
_ 不锈钢电机连泵



型号	流量		压力		功率		转速	电源
Model	L/min	GPM	bar	psi	HP	kW	rpm	V/HZ
JPBF0510-C24	5	1.3	100	1450	1.3	1.0	1450	220/50
JPBF0810-C24/C28	8	2.1	100	1450	2.1	1.5	1450	220/50
JPBF1110-C28	11	2.9	100	1450	2.9	2.1	1450	220/50
JPBF1310-C28	13	3.4	100	1450	3.4	2.5	1450	220/50
JPBF1510-C24/C28	15	4	100	1450	3.9	2.9	1450	380/50

EJPCF-C SERIES

_ 不锈钢电机连泵



型号	流量		压力		功率		转速	电源
Model	L/min	GPM	bar	psi	HP	kW	rpm	V/HZ
EJPCF-1120C28	11	2.9	200	2900	5.7	4.2	1450	380/50
EJPCF-1520C 28	15	4	200	2900	7.8	5.7	1450	380/50
EJPCF-1920C 28	19	5.02	200	2900	9.8	7.2	1450	380/50
EJPCF-2320C 28	23	6.08	150	2175	8.9	6.6	1450	380/50
EJPCF-3010C 28	30	7.9	100	1450	7.8	5.7	1450	380/50
EJPCF-3510C 28	35	9.25	100	1450	9.1	6.7	1450	380/50

调压阀 REGULATE VALVE



JV25-K 内回 JV25-K 外回 JV25 内回 JV25 外回 JV30 JV35

型号 Model	流量 L/min GPM		压力 bar psi		进水口 Inlet	出水口 Outlet	回水口 Backwater	温度 °C
JV25-K 内回	30	7.9	0-250	0-3625	G3/8	选配	/	80
JV25-K 外回	30	7.9	0-250	0-3625	G3/8	选配	G1/4	80
JV25 内回	30	7.9	0-250	0-3625	G3/8	选配	/	80
JV25 外回	30	7.9	0-250	0-3625	G3/8	选配	G1/4	80
JV30	85	22.5	0-300	0-4350	G1/2	G1/2	G1/2	90
JV35	40	10.6	0-350	0-5075	G3/8	G3/8	G1/2	90

调压阀 REGULATE VALVE



JV50 JV90 JV150 JVF31 JVF32 JV60

型号 Model	流量 L/min GPM		压力 bar psi		进水口 Inlet	出水口 Outlet	回水口 Backwater	温度 °C
JV50	80	21.1	0-500	0-7250	G1/2	G1/2	G1/2	90
JV90	60	15.8	0-900	0-13050	G1/2	G1/2	G1/2	60
JV150	30	7.8	0-1500	21750	G3/8	/	G3/8	60
JVF31	40	10.6	0-300	0-4350	G3/8	G3/8	G3/8	100
JVF32	80	21.1	0-320	0-4640	G1/2	G1/2	G1/2	100
JV60	80	21.1	0-600	0-8700	G1/2	G1/2	G1/2	90

调压阀 REGULATE VALVE



JV80 JV20 JV20S JVF20 JV45

型号 Model	流量 L/min GPM		压力 bar psi		进水口 Inlet	出水口 Outlet	回水口 Backwater	温度 °C
JV80	80	21.1	0-800	0-11600	G1/2	G1/2	G1/2	90
JV20	200	52.8	0-150	0-2175	G1	G1	G1	90
JV20S	200	52.8	0-150	0-2175	G1	G1	G1	90
JVF20	200	52.8	0-150	0-2175	G1	G1	G1	100
JV45	450	119	0-300	0-4350	G1" 1/4	G1" 1/4	G1" 1/2	90

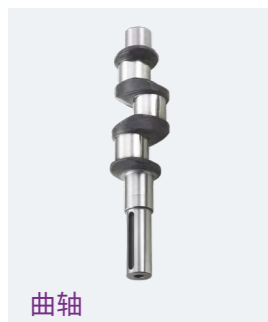
安全阀 SAFETY VALVE



JS20 JSF20 JS30 JS80 JS150 JSF15

型号 Model	流量 L/min GPM		压力 bar psi		进水口 Inlet	出水口 Outlet	回水口 Backwater	温度 °C
JS20	200	52.8	0-150	0-2175	G3/4	/	G1/2	90
JSF20	200	52.8	0-200	0-2175	G3/4	/	G1/2	90
JS30	500	132	0-300	0-4350	G1	/	G1	90
JS80	80	21.1	0-800	0-11600	G3/8	/	G1/2	90
JS150	30	7.8	0-1500	0-21750	G3/8	/	G3/8	90
JSF15	40	10.6	0-100	0-1450	G3/8	/	G3/8	90

配件 REPAIR KITS



曲轴



柱塞



柱塞



柱塞



连杆



连杆



陶瓷管



单向阀

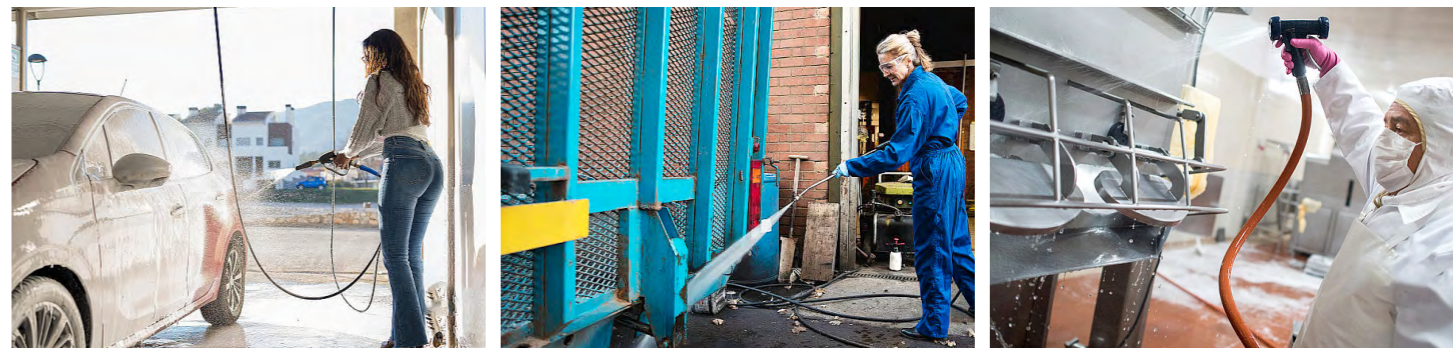


水封

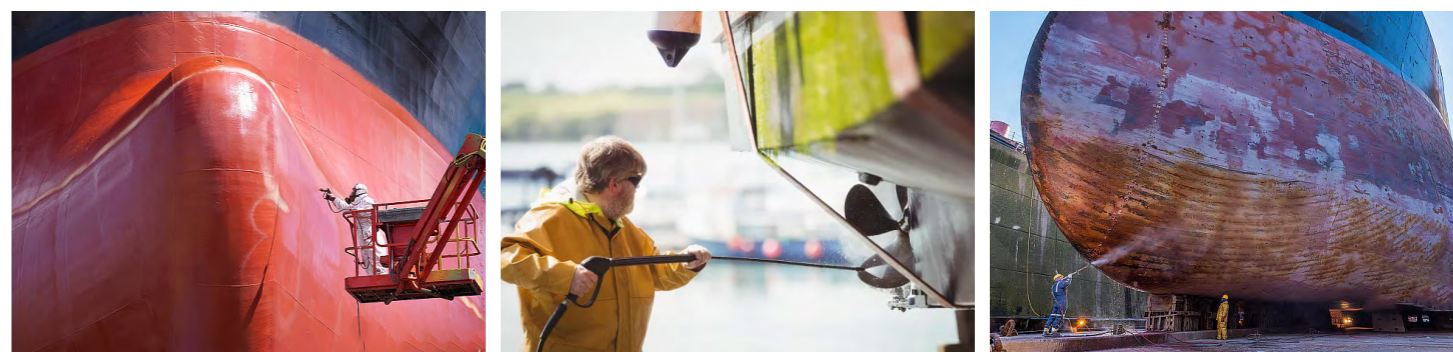


油封

应用场景



商业 / 工业清洗



船舶清洗



海水淡化



环卫保洁